

Devon&Devon

SURFACES

WALLPAPER
COLLECTION 2019

30th

THIRTY YEARS
ANNIVERSARY

WALLPAPER COLLECTION / 236

VITO NESTA

- 240 _ BROADWAY
- 242 _ EMPIRE
- 244 _ MAJESTIC
- 246 _ PARADISEA
- 248 _ SAMOA
- 250 _ BOTANICA
- 252 _ CASABLANCA
- 254 _ COSTARICA
- 258_GIACARTA
- 262 _ LEAF
- 264 _ BAMBOO
- 266 _ CHAIN
- 268 _ KNOT
- 270 _ NAPPINE
- 272 _ RIO
- 274 _ VANDEVELDE
- 278 _ VERSACRUM
- 282 _ WAGNER

FRANCESCA GRECO

- 286 _ BIRDS
- 290 _ CARDOON
- 292 _ RAINFOREST
- 294 _ COROLLA
- 296 _ LILIES
- 298 _ PLUMES
- 300 _ GINKO
- 304 _ IVY

NINA FARRÉ

- 308 _ ARABESQ
- 312 _ BLUE TILES
- 316 _ FONDU
- 320 _ SAMODE
- 322 _ SAMODE NEGA
- 324 _ TAPISSERIE

GENERAL TERMS AND CONDITIONS OF SALE / 334

VITO NESTA _ 238

- 240 _ BROADWAY
- 242 _ EMPIRE
- 244 _ MAJESTIC
- 246 _ PARADISEA
- 248 _ SAMOA
- 250 _ BOTANICA
- 252 _ CASABLANCA
- 254 _ COSTARICA
- 258 _ GIACARTA
- 262 _ LEAF
- 264 _ BAMBOO
- 266 _ CHAIN
- 268 _ KNOT
- 270 _ NAPPINE
- 272 _ RIO
- 274 _ VANDELDELDE
- 278 _ VERSACRUM
- 282 _ WAGNER

FRANCESCA GRECO _ 284

- 286 _ BIRDS
- 290 _ CARDOON
- 292 _ RAINFOREST
- 294 _ COROLLA
- 296 _ LILIES
- 298 _ PLUMES
- 300 _ GINKO
- 304 _ IVY

NINA FARRÉ _ 306

- 308 _ ARABESQ
- 312 _ BLUE TILES
- 316 _ FONDU
- 320 _ SAMODE
- 322 _ SAMODE NEGA
- 324 _ TAPISSERIE

Wallpaper Collection è la collezione di carte da parati realizzata in collaborazione con i designer Francesca Greco, Nina Farré e Vito Nesta. Una proposta originale, elegante, ricca e versatile, in perfetta sintonia con la filosofia del brand, pensata per decorare case private, progetti residenziali e ricercati boutique hotels.

La Devon&Devon Wallpaper Collection si adatta con equilibrio a molteplici contesti, suggerendo rigorose ambientazioni classiche o squisitamente eclettiche.

WALLPAPER COLLECTION

The Wallpaper Collection is produced in cooperation with designers Francesca Greco, Nina Farré and Vito Nesta. Created to decorate private houses, residential projects and exclusive boutique hotels. This original, elegant and versatile proposal is perfectly aligned with the philosophy of the brand.

The Devon&Devon Wallpaper Collection adapts seamlessly to a wide variety of different contexts, suggesting interior ambiances from the classical to the exquisitely eclectic.

VITO NESTA



Pugliese di origine e milanese di adozione, Vito Nesta si laurea in interior design a Firenze. Designer, art director, arredatore e artigiano, è animato da curiosità per le culture più diverse e include il viaggio come una costante della sua formazione. Il suo pensiero progettuale si nutre di graphic design, architettura, fotografia e pittura. Collabora con Riva 1920, Les Ottomans, Karpeta, Effetto Vetro, Texturae, Cadriano, Secondo Me Gallery, My Home Collection e Fratelli Majello.

Born in Puglia but adopted a long time ago by the city of Milan, Vito Nesta graduated in interior design in Florence. Designer, art director, interior decorator and craftsman, Vito Nesta is animated by an enormous curiosity for the vast variety of foreign cultures. Travel is the constant of his training. His work as a designer is inspired by graphic design, architecture, photography and painting. He collaborates with brands such as Riva 1920, Les Ottomans, Karpeta, Effetto Vetro, Texturae, Cadriano, Secondo Me Gallery, My Home Collection and Fratelli Majello.

240 _ BROADWAY
242 _ EMPIRE
244 _ MAJESTIC
246 _ PARADISEA
248 _ SAMOA
250 _ BOTANICA
252 _ CASABLANCA
254 _ COSTARICA
258 _ GIACARTA
262 _ LEAF
264 _ BAMBOO
266 _ CHAIN
268 _ KNOT
270 _ NAPPINE
272 _ RIO
274 _ VANDEVELDE
278 _ VERSACRUM
282 _ WAGNER

BROADWAY



◀ 1:10

BROADWAY GREY
VNBROG

BROADWAY BLACK - VNBROB



◀ 1:50

mm L: 4230 x H: 4000



EMPIRE



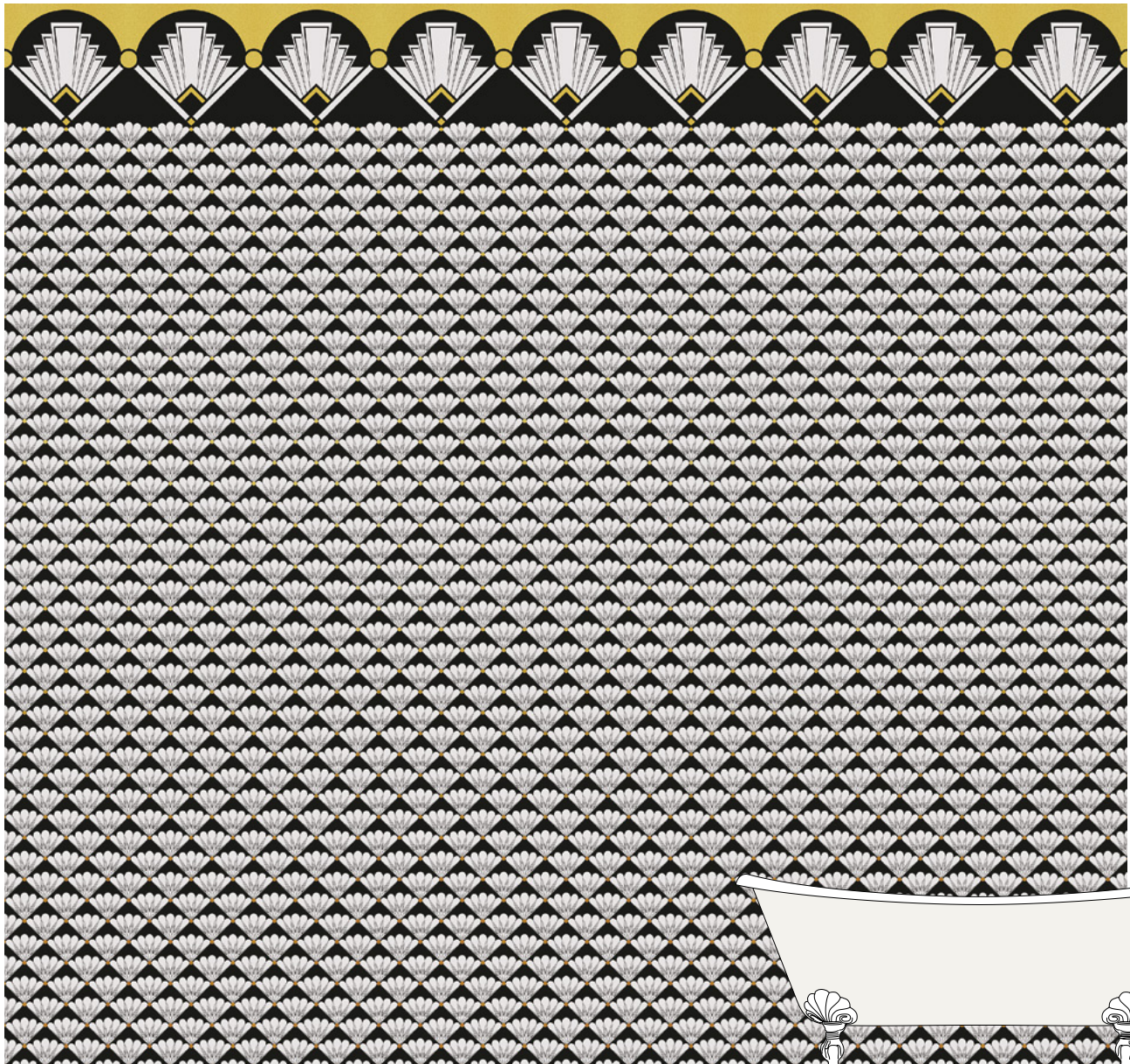
EMPIRE ICE
VNEMPI



EMPIRE LUXURY
VNEMPL

◀ 1:10

EMPIRE BLACK&WHITE - VNEMPB



◀ 1:50

mm L: 4230 x H: 4000



MAJESTIC



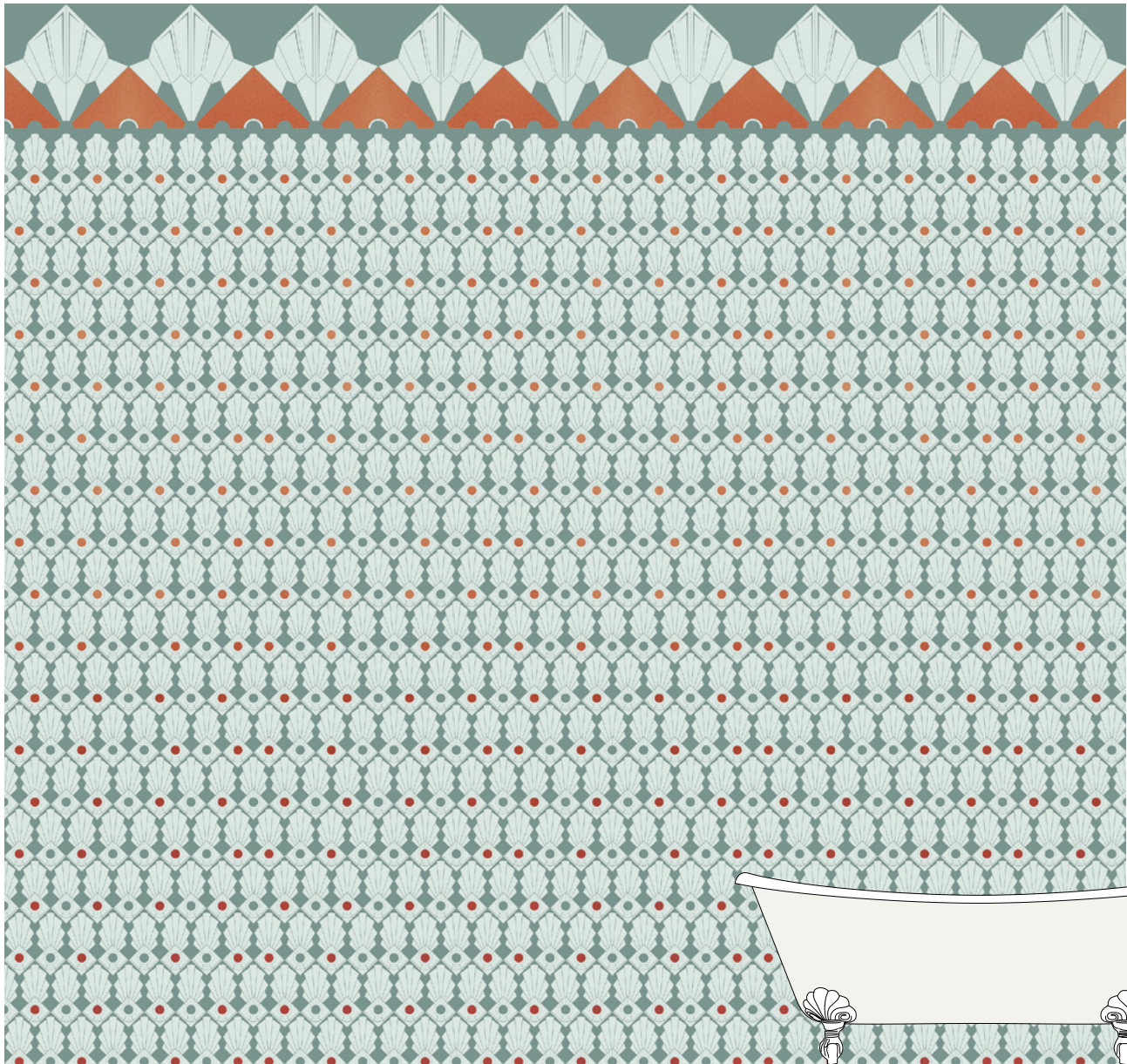
MAJESTIC GOLD
VNMAJG



MAJESTIC WINTER
VNMAJW

◀ 1:10

MAJESTIC COPPER - VNMAJC



◀ 1:50

mm L: 4230 x H: 4000

WALLPAPER COLLECTION - VITO NESTA



PARADISEA



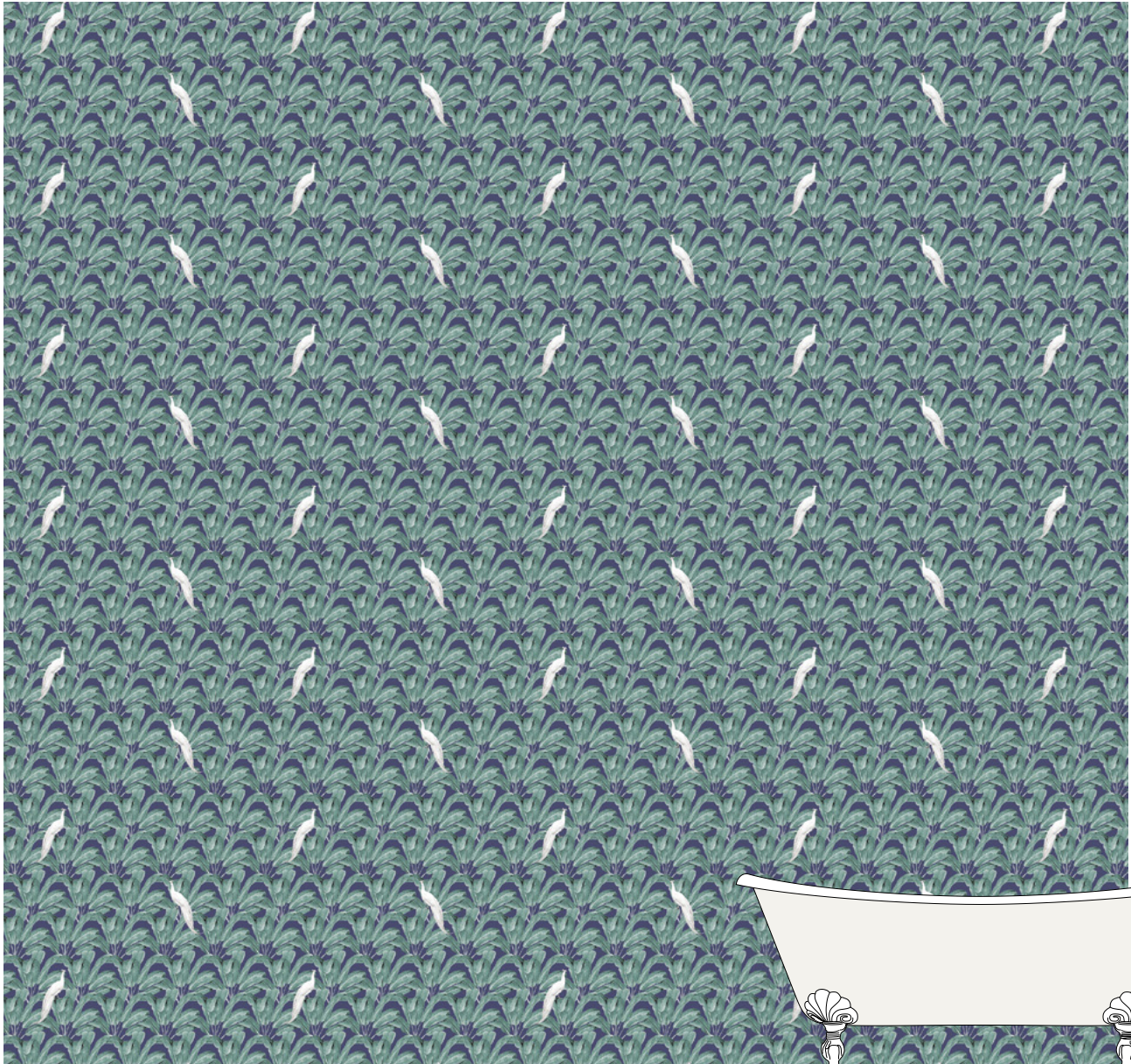
PARADISEA RED
VNPARR



PARADISEA SOFT
VNPARS

◀ 1:10

PARADISEA GREEN - VNPARG



◀ 1:50

mm L: 4230 x H: 4000



SAMOA



SAMOA GOLD
VNSAMG



SAMOA RED
VNSAMR

◀ 1:10

SAMOA BLACK&WHITE - VNSAMB



◀ 1:50

mm L: 4230 x H: 4000



BOTANICA



BOTANICA DARK
VNBOTD



BOTANICA GREY
VNBOTG



BOTANICA MAKEUP
VNBOTM



BOTANICA WINE
VNBOTW

◀ 1:10

BOTANICA BLACK&WHITE - VNBOTB



◀ 1:50

mm L: 4230 x H: 4000

WALLPAPER COLLECTION - VITO NESTA



CASABLANCA



CASABLANCA BLACK&WHITE
VNCASB



CASABLANCA CANVAS
VNCASC



CASABLANCA COFFEE
VNCASCO

◀ 1:10

BOTANICA ANCIENT - VNCASA



◀ 1:50

mm L: 4230 x H: 4000

WALLPAPER COLLECTION - VITO NESTA



COSTARICA



COSTARICA GREEN
VNCOSG



COSTARICA PETROL
VNCOSP



COSTARICA PURPLE
VNCOSPU



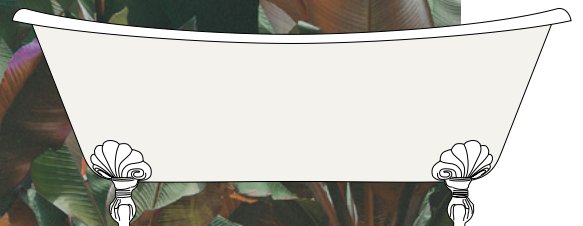
COSTARICA WINE
VNCOSW

◀ 1:10

COSTARICA DUST - VNCOSD

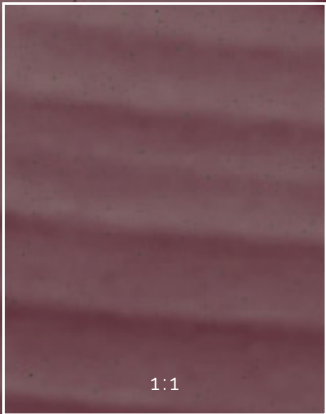


◀ 1:50



mm L: 4230 x H: 4000

WALLPAPER COLLECTION - VITO NESTA



COSTARICA WINE
VNCOSW

COSTARICA





COSTARICA WINE

GIACARTA



GIACARTA NIGHT
VNGIAN



GIACARTA NOON
VNGIANO



GIACARTA SUNSET
VNGIAS

◀ 1:10

GIACARTA GLOAMING - VNGIAG



◀ 1:50

mm L: 4230 x H: 4000

WALLPAPER COLLECTION - VITO NESTA



1:1

GIACARTA NIGHT
VNGIAN

GIACARTA





GIACARTA GLOAMING

LEAF



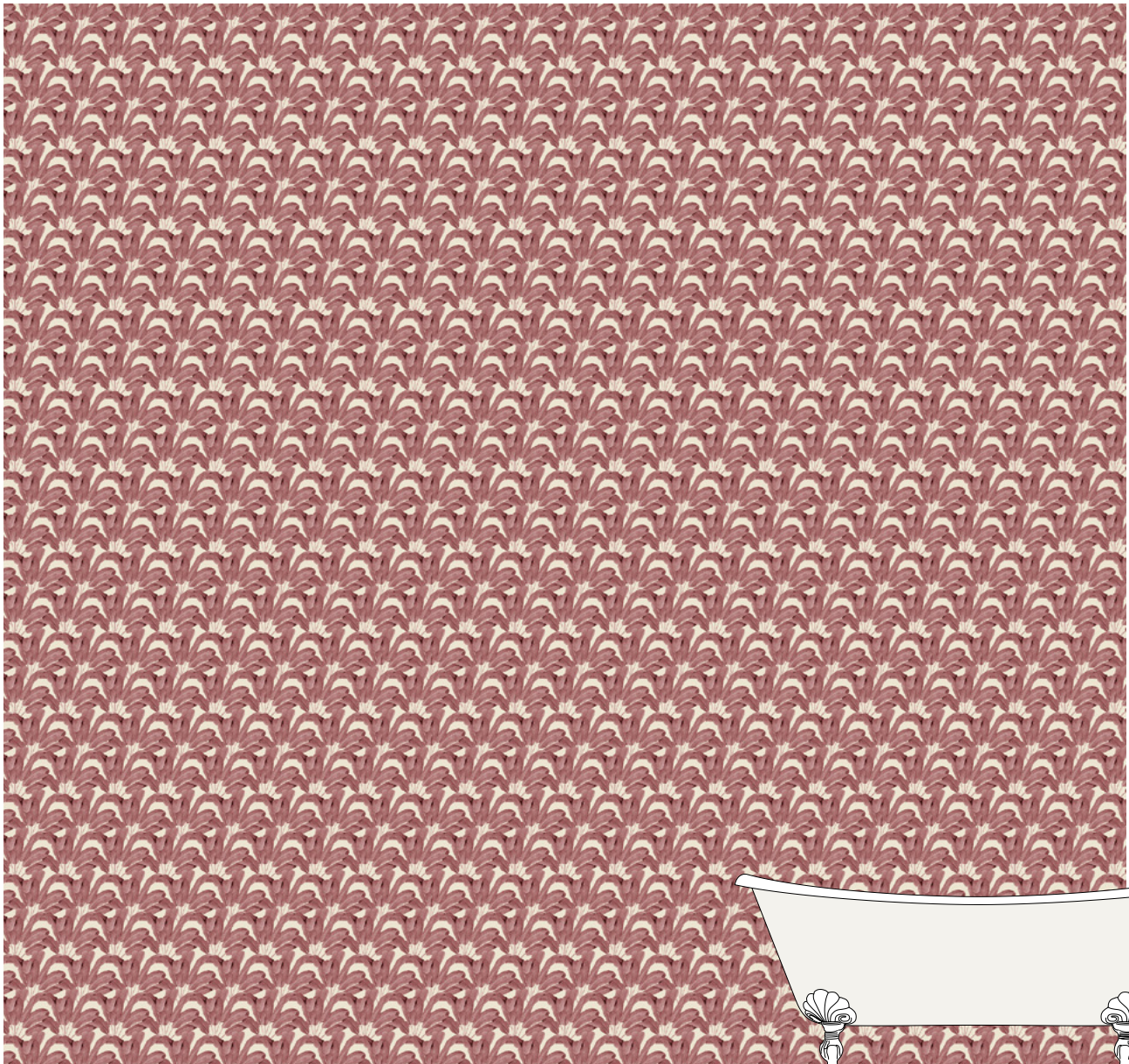
LEAF SAGE
VNLEAS



LEAF YELLOW
VNLEAY

◀ 1:10

LEAF RED - VNLEAR

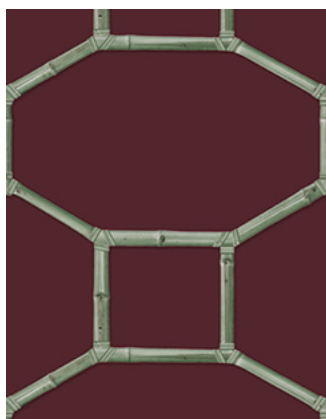


◀ 1:50

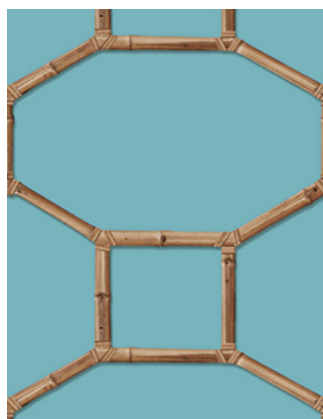
mm L: 4230 x H: 4000



BAMBOO



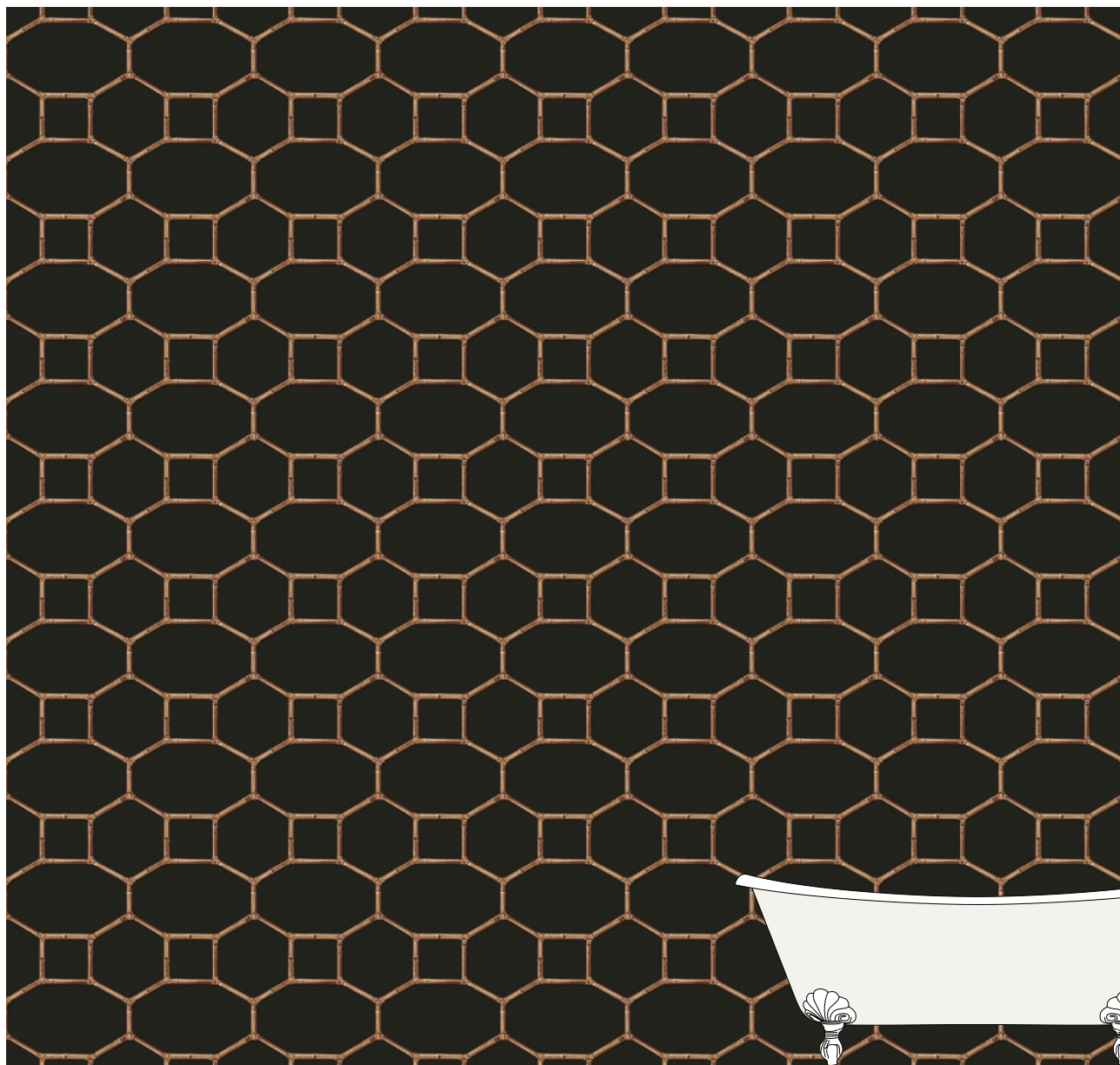
BAMBOO RED
VNBA MR



BAMBOO SKY
VNBAMS

◀ 1:10

BAMBOO BLACK - VNBAMB

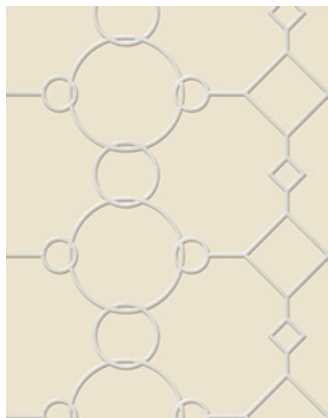


◀ 1:50

mm L: 4230 x H: 4000



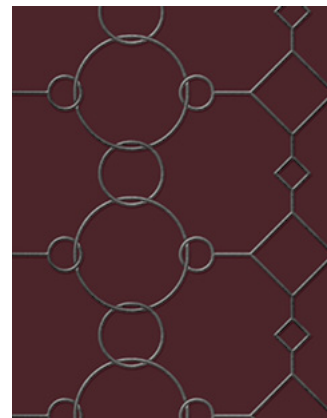
CHAIN



CHAIN IVORY
VNCHAI



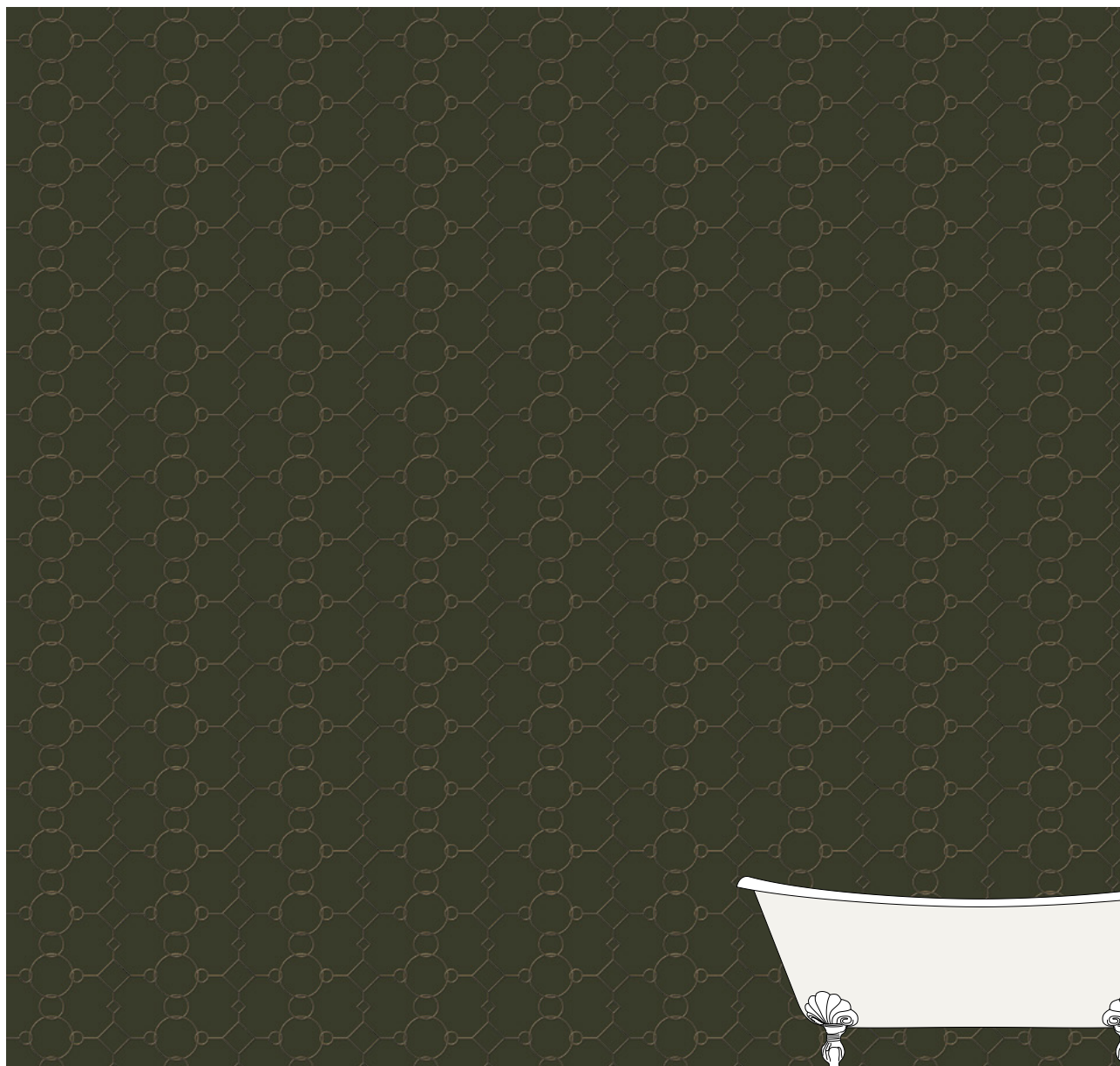
CHAIN MUD
VNCHAM



CHAIN RED
VNCHAR

◀ 1:10

CHAIN GREEN - VNCHAG



◀ 1:50

mm L: 4230 x H: 4000



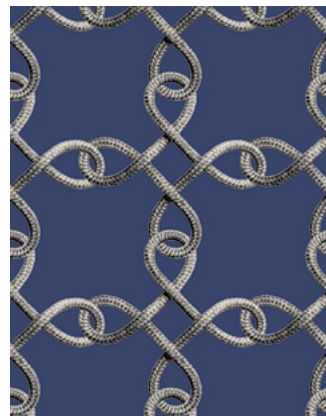
KNOT



KNOT WHITE&BLACK
VNKNOW



KNOT RED
VNKNOR



KNOT BLUE
VNKNOB

◀ 1:10

KNOT CREAM - VNKNOC



◀ 1:50

mm L: 4230 x H: 4000



NAPPINE



NAPPINE GREEN
VNNAPGR



NAPPINE RED
VNNAPR

◀ 1:10

NAPPINE GOLD - VNNAPG



◀ 1:50

mm L: 4230 x H: 4000

WALLPAPER COLLECTION - VITO NESTA



RIO



RIO GOLD
VNRIOG



RIO SEPPIA
VNRIOS

◀ 1:10

RIO COPPER - VNRIOC



◀ 1:50

mm L: 4230 x H: 4000

WALLPAPER COLLECTION - VITO NESTA



VANDEVELDE



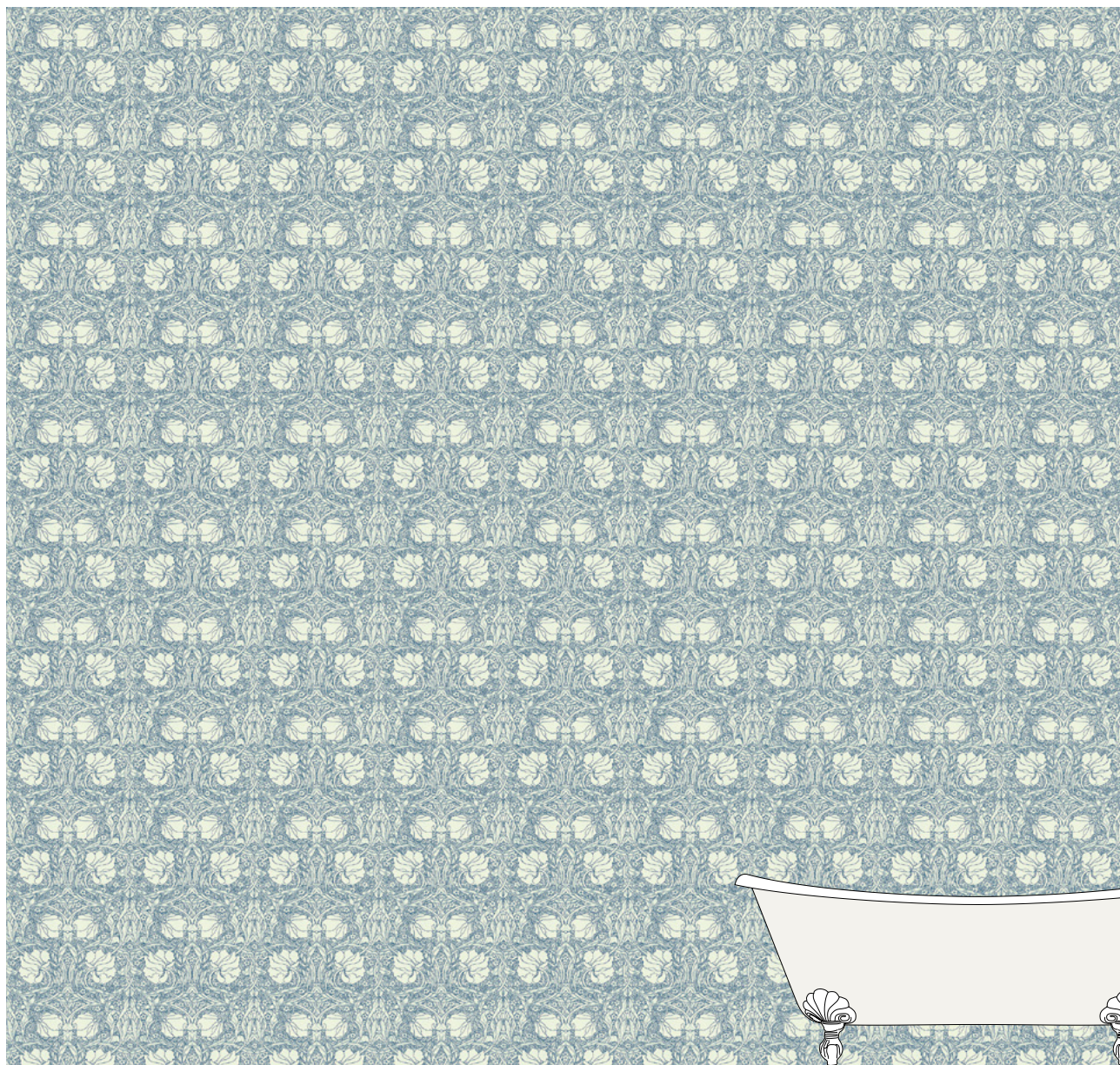
VANDEVELDE ECRU
VNVANE



VANDEVELDE RED
VNVANR

◀ 1:10

VANDEVELDE COLD - VNVANC



◀ 1:50

mm L: 4230 x H: 4000

WALLPAPER COLLECTION - VITO NESTA



1:1

VANDELDE ECRU
VNVANE





VERSACRUM



VERSACRUM ICE
VNVERI



VERSACRUM SUMMER
VNVERS

◀ 1:10

VERSACRUM COFFEE - VNVERC



◀ 1:50

mm L: 4230 x H: 4000

WALLPAPER COLLECTION - VITO NESTA

1:1

VERSACRUM ICE
VNVERI





WAGNER



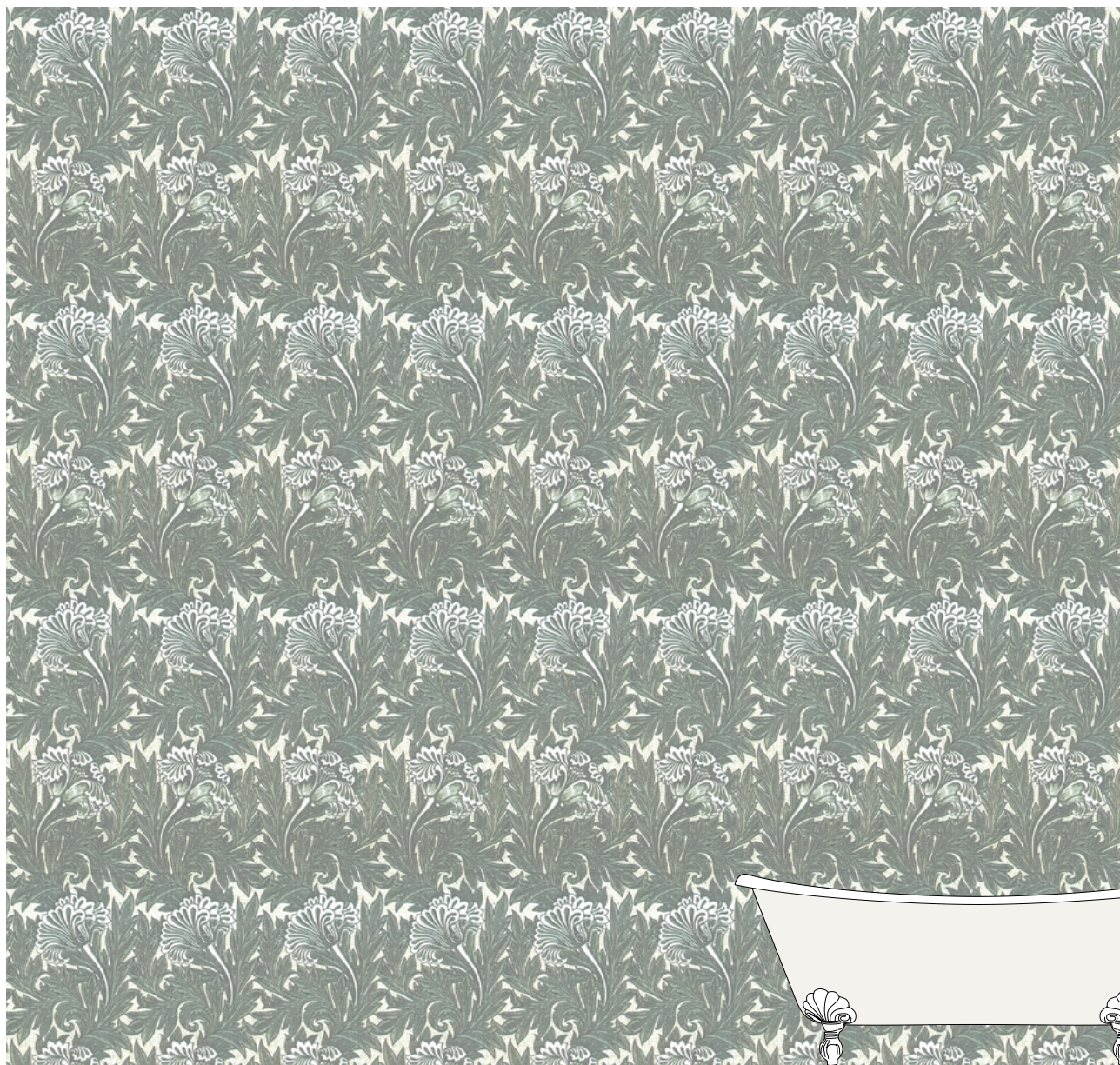
WAGNER ICE
VNWAGI



WAGNER SOFT
VNWAGS

◀ 1:10

WAGNER DUST - VNWAGD



◀ 1:50

mm L: 4230 x H: 4000



FRANCESCA GRECO



Francesca Greco, pittrice e disegnatrice, dopo aver studiato arte e letteratura, inizia a collaborare con editori italiani ed esteri: i suoi libri vengono pubblicati in molti paesi, dagli Stati Uniti alla Cina. La sua produzione artistica spazia dalla pittura alla realizzazione di sculture e giochi in legno, dal design di tessuti, alla ceramica. Nel suo studio crea innumerevoli oggetti poetici, con carattere e identità propri: solo pezzi unici. Nata a Foligno, vive e lavora fra Umbria e Toscana.

A painter and illustrator, Francesca Greco began working with both Italian and international publishers after studying art and literature, her books are published in many countries from the United States to China. Her artistic catalogue ranges from painting to sculpture and to wooden games, and from the design of fabrics to ceramics. In her atelier, she creates countless poetic objects, each with its own character and identity: purely unique items. Born in Foligno, she lives and works between Umbria and Tuscany.

286 _ BIRDS
290 _ CARDOON
292 _ RAINFOREST
294 _ COROLLA
296 _ LILIES
298 _ PLUMES
300 _ GINKO
304 _ IVY

BIRDS



BIRDS 2
FGBIR2



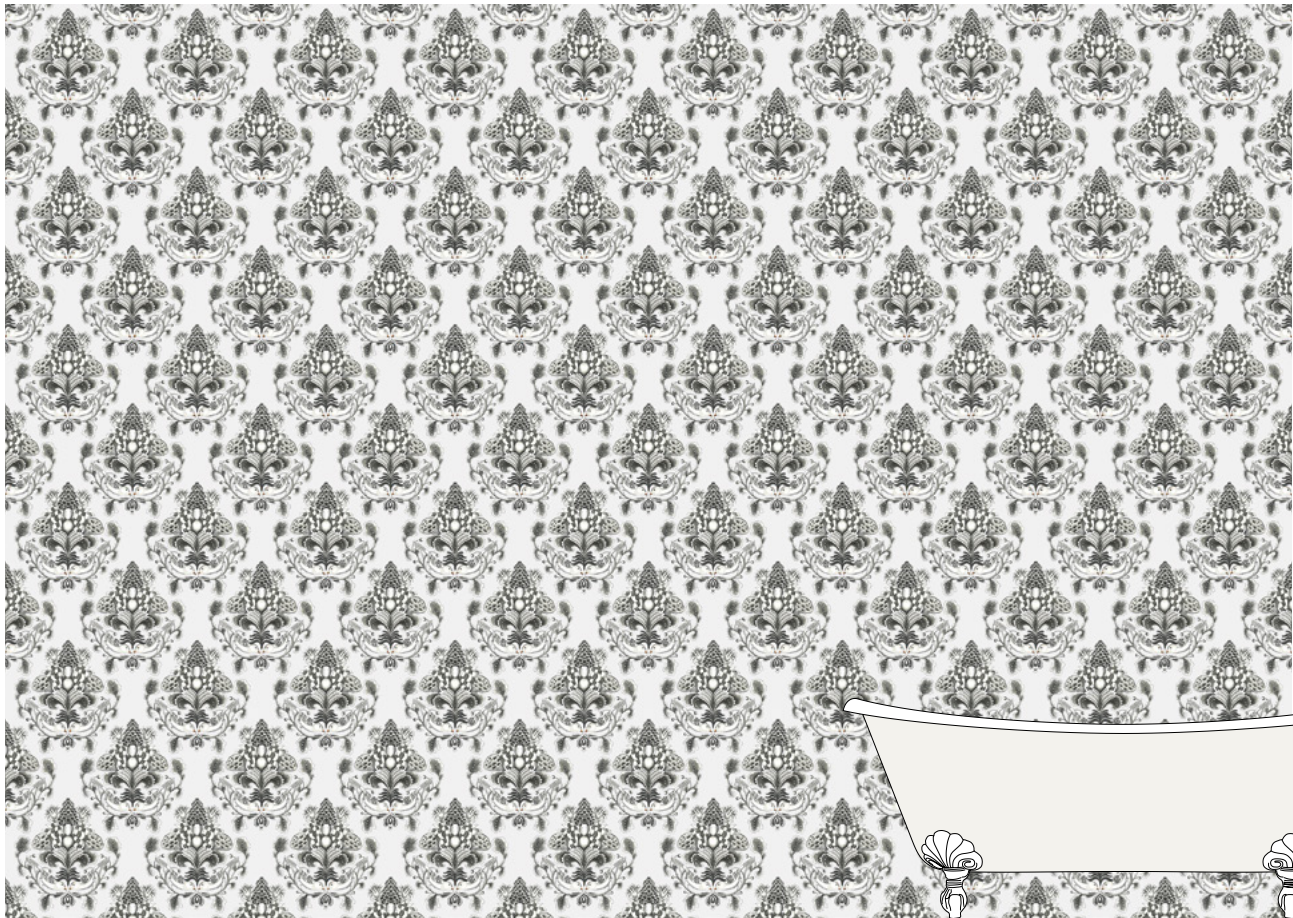
BIRDS 3
FGBIR3



BIRDS 4
FGBIR4

◀ 1:10

BIRDS 1 - FGBIR1



◀ 1:50

mm L: 4230 x H: 3000



1:1

BIRDS 4
FGBIR4





CARDOON



CARDOON 2
FGCAR2



CARDOON 3
FGCAR3

◀ 1:10

CARDOON 1 - FGCAR1



◀ 1:50

mm L: 4230 x H: 3000



RAINFOREST



RAINFOREST 2
FGRA12



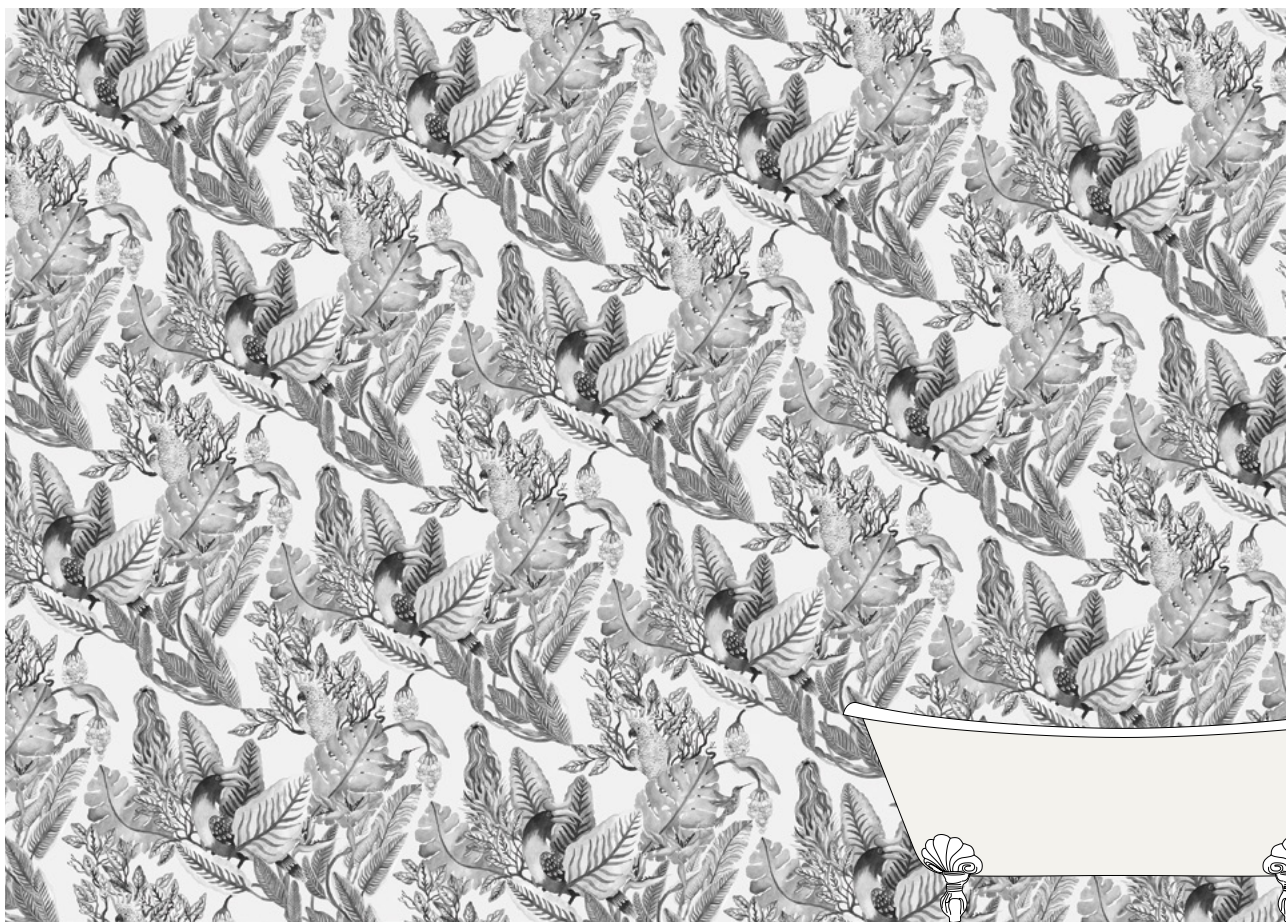
RAINFOREST 3
FGRA13



RAINFOREST 4
FGRA14

◀ 1:10

RAINFOREST 1 - FGRA11



◀ 1:50

mm L: 4230 x H: 3000



COROLLA



COROLLA 2
FGCOR2



COROLLA 3
FGCOR3



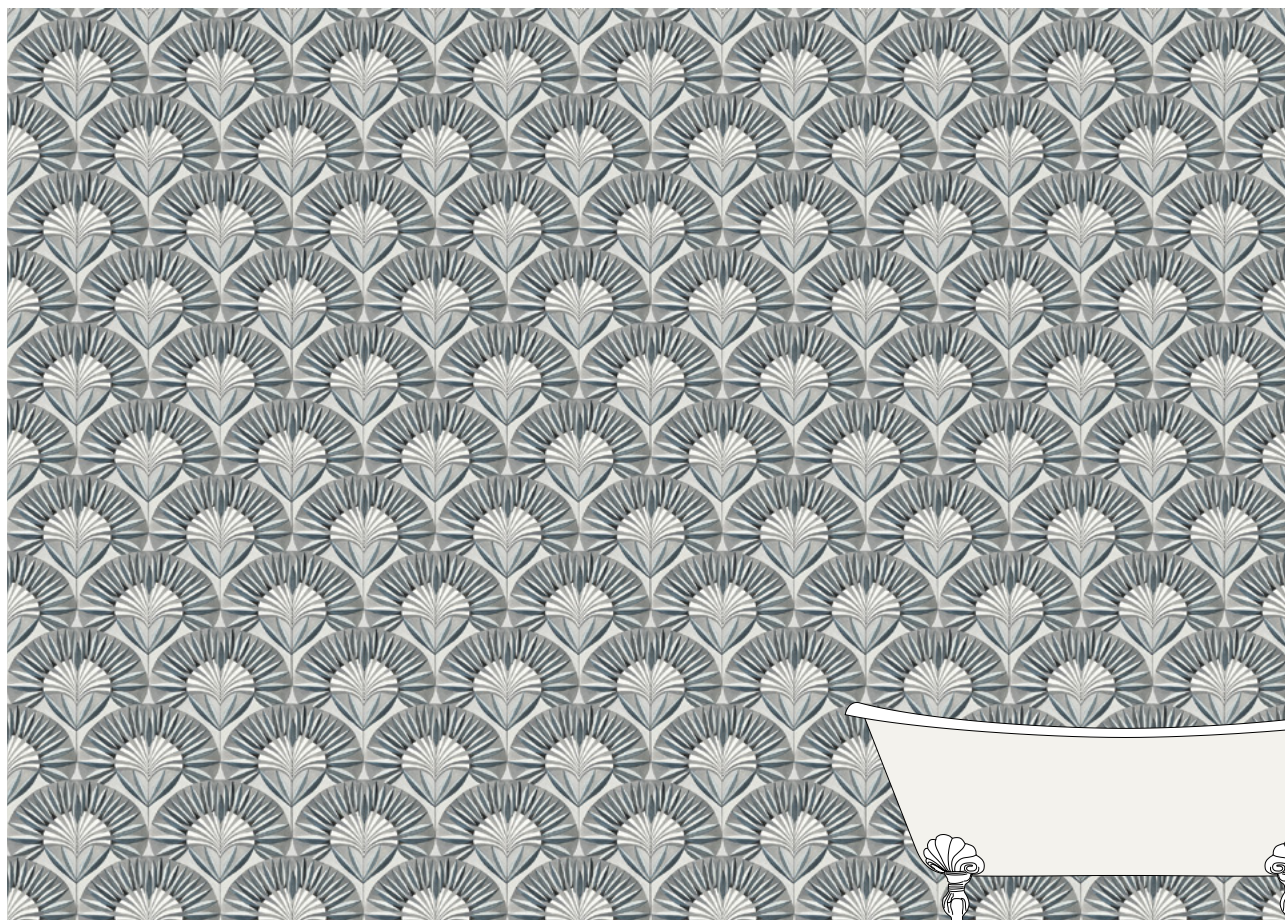
COROLLA 4
FGCOR4



COROLLA 5
FGCOR5

◀ 1:10

COROLLA 1 - FGCOR1



◀ 1:50

mm L: 4230 x H: 3000



LILIES



LILIES 2
FGLIL2



LILIES 3
FGLIL3



LILIES 4
FGLIL4

◀ 1:10

LILIES 1 - FGLIL1



◀ 1:50

mm L: 4230 x H: 3000



PLUMES



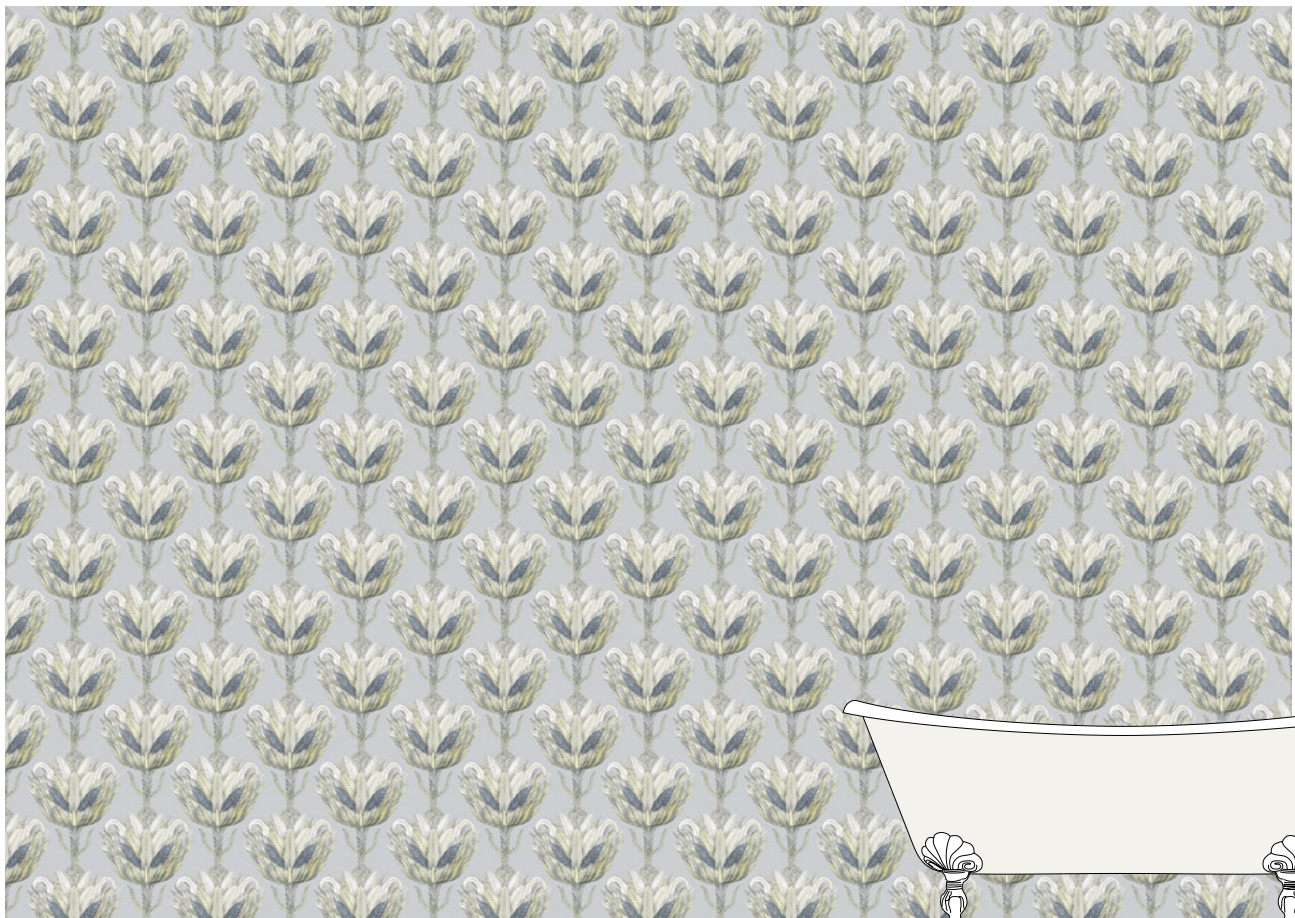
PLUMES 2
FGPLU2



PLUMES 3
FGPLU3

◀ 1:10

PLUMES 1 - FGPLU1



◀ 1:50

mm L: 4230 x H: 3000



GINKO



GINKO 2
FGGIN2



GINKO 3
FGGIN3



GINKO 4
FGGIN4



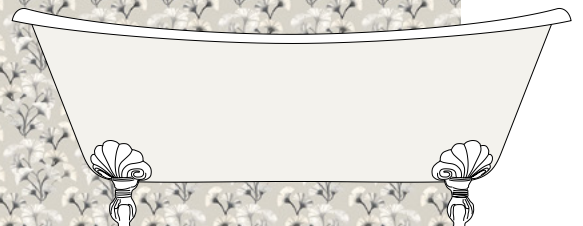
GINKO 5
FGGIN5

◀ 1:10

GINKO 1 - FGGIN1



◀ 1:50



mm L: 4230 x H: 3000



GINKO



GINKO 7
FGGIN7



GINKO 8
FGGIN8



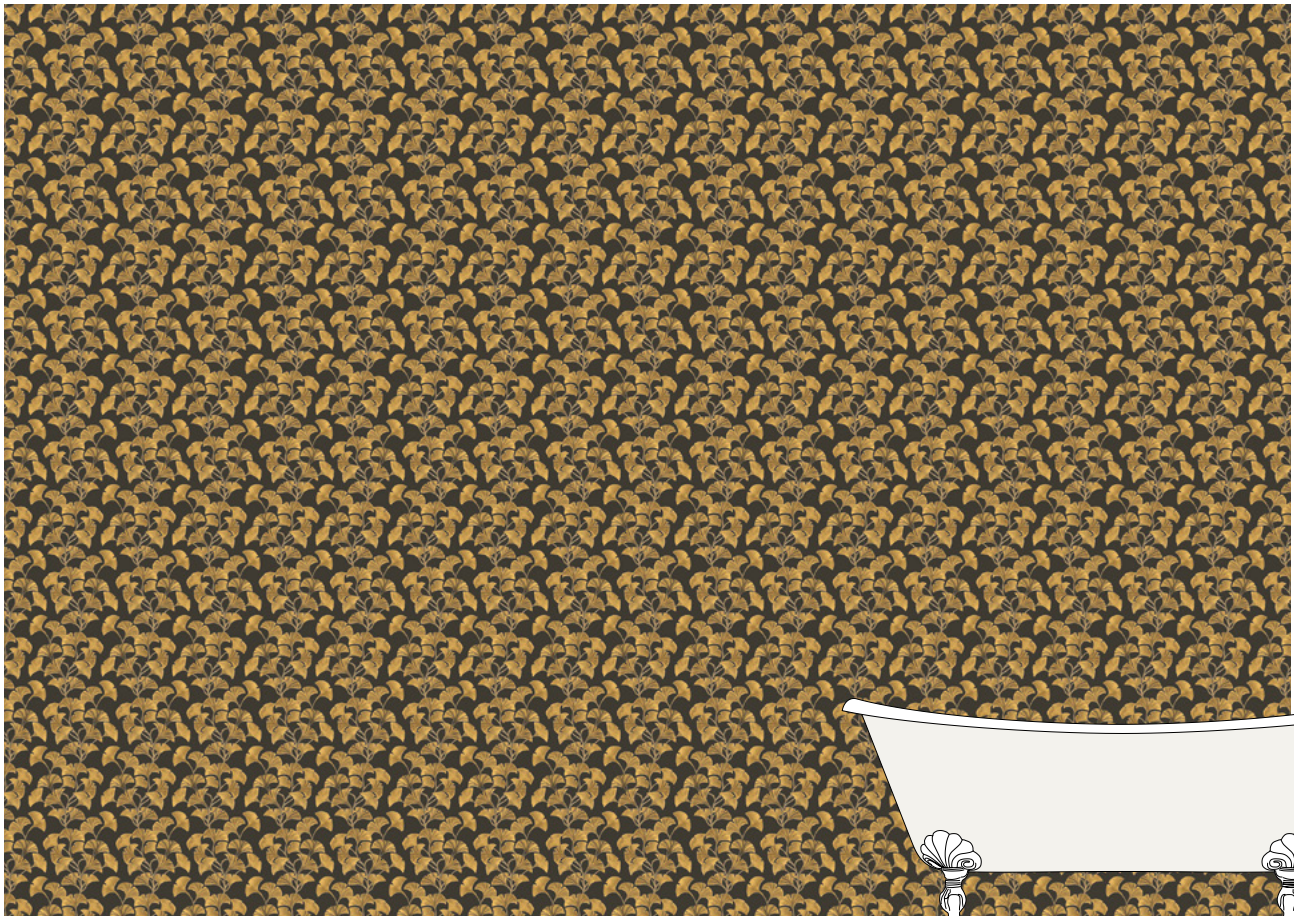
GINKO 9
FGGIN9



GINKO 10
FGGIN10

◀ 1:10

GINKO 6 - FGGIN6



◀ 1:50

mm L: 4230 x H: 3000



1:1

GINKO 8
FGGIN8

IVY



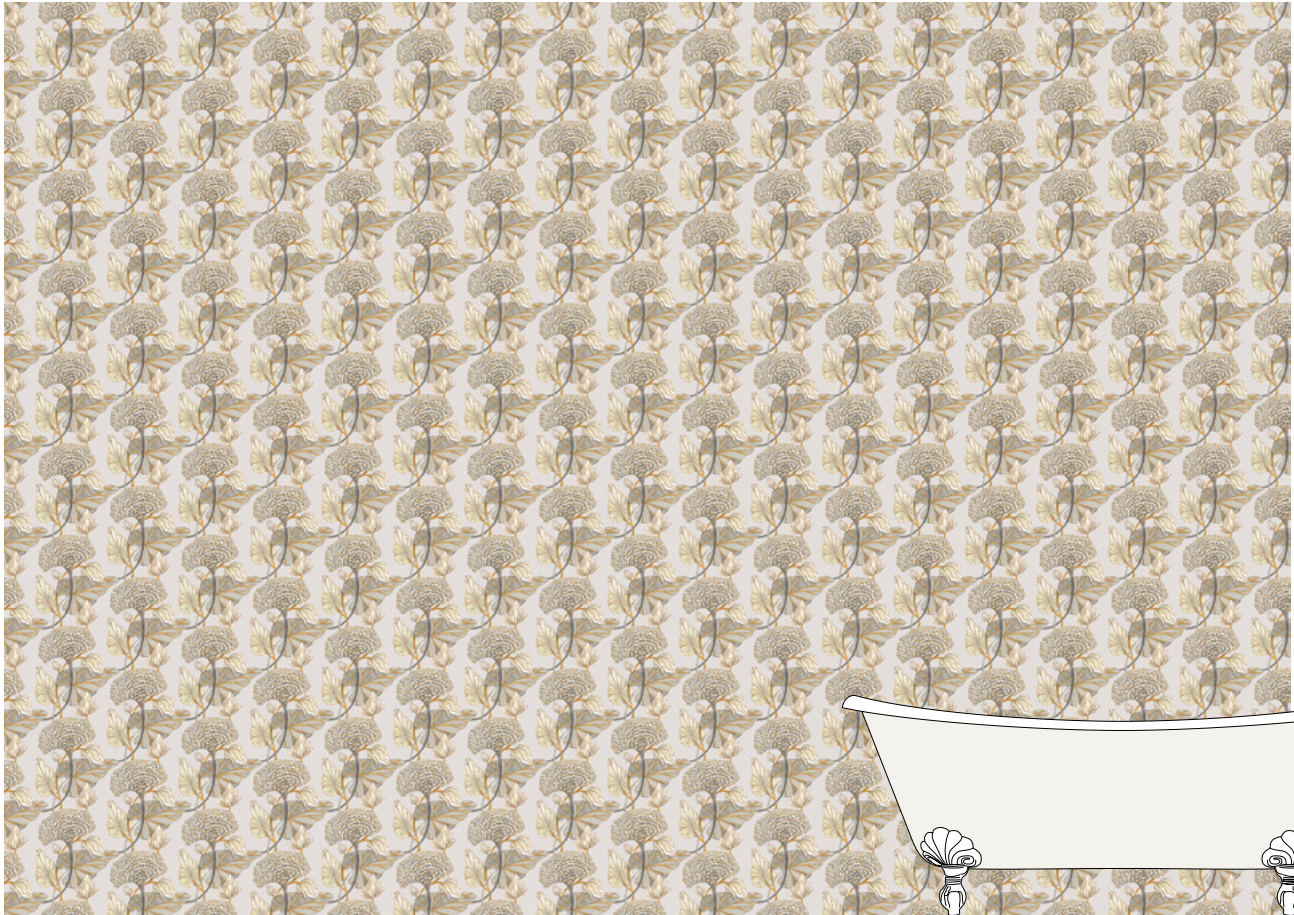
IVY 2
FGIVY2



IVY 3
FGIVY3

◀ 1:10

IVY 1 - FGIVY1

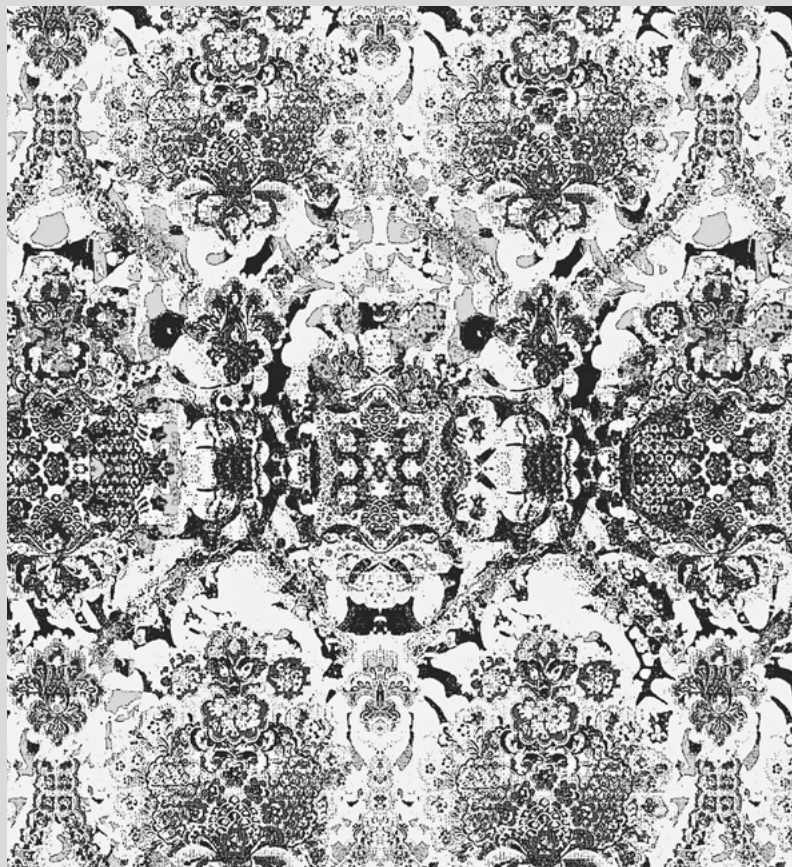


◀ 1:50

mm L: 4230 x H: 3000



NINA FARRÉ



Nina Farré ha mosso i suoi primi passi come designer in india, imparando antiche tecniche manifatturiere che le hanno permesso di realizzare in seguito effetti grafici originali e vari. Come designer per la moda e l'arredamento, Nina Farré ama esplorare molteplici stili grafici: questa libertà e questo mélange rendono il suo lavoro molto riconoscibile e al contempo difficilmente schematizzabile. Nel 2016, Nina Farré ha sviluppato un concept di disegni su pietra bianca del mediterraneo, grazie al quale è entrata in contatto con Devon&Devon.

Nina Farré took her first steps as a designer in india, learning the ancient manufacturing techniques that she uses to create a variety of original graphic effects. As both a fashion and interior designer, Nina Farré enjoys exploring a range of graphic styles: this freedom and eclecticism makes her work immediately recognizable and, at the same time, elusive to categorisation. In 2016, Nina Farré developed a concept for designs using the white stone of the mediterranean, through which she came into contact with Devon&Devon.

308 _ ARABESQ
312 _ BLUE TILES
316 _ FONDU
320 _ SAMODE
322 _ SAMODE NEGA
324 _ TAPISSERIE

ARABESQ



ARABESQ FUSHIA
NFARAF



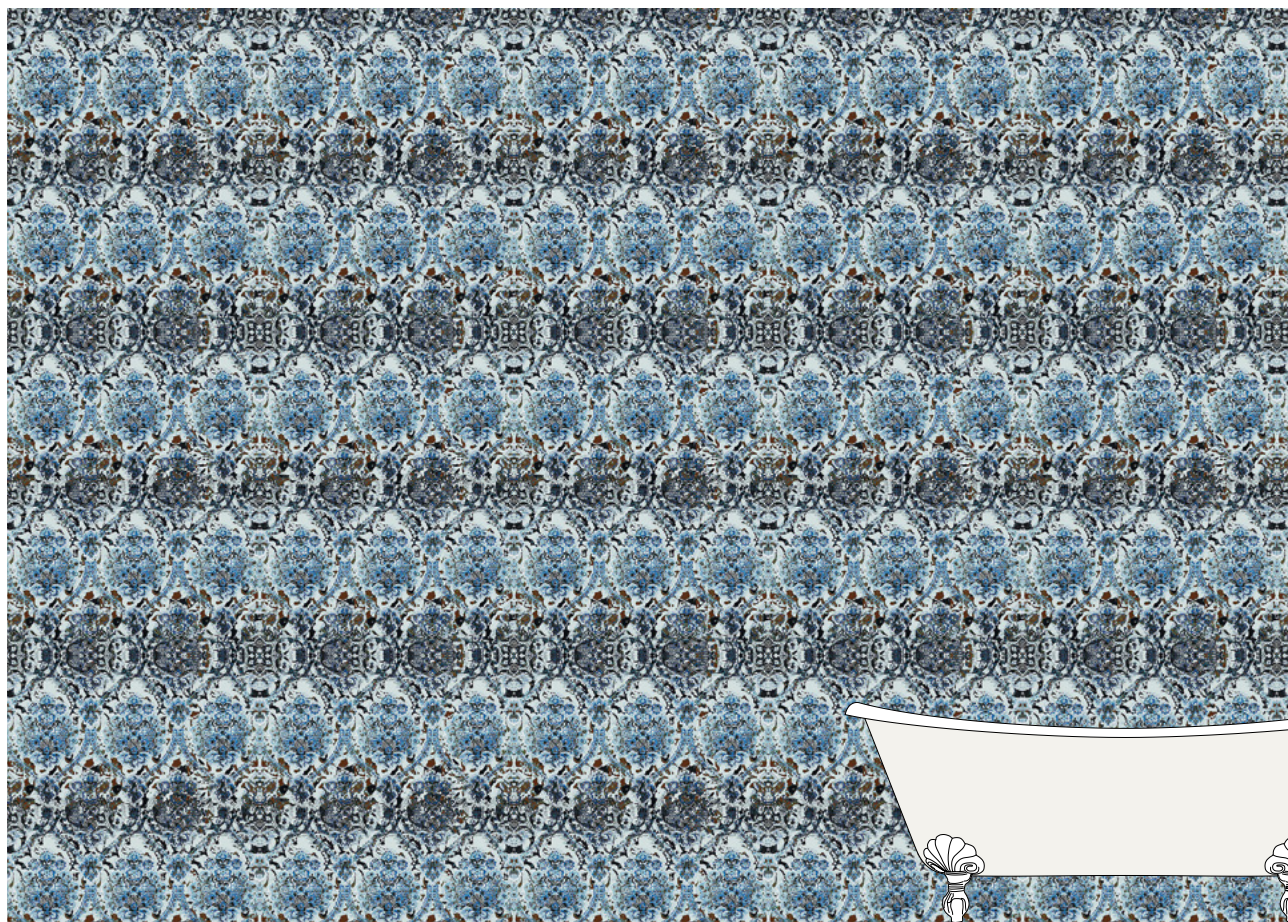
ARABESQ GREY
NFARAG



ARABESQ KAKI
NFARAK

◀ 1:10

ARABESQ BLUE - NFARAB



◀ 1:50

mm L: 4230 x H: 3000



1:1

ARABESO GREY
NFARAG



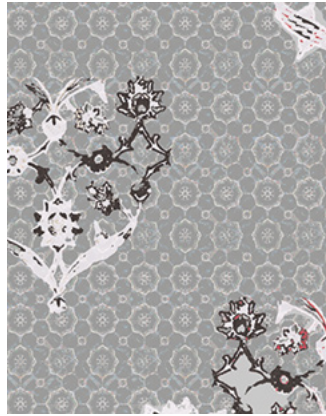


ARABESQUE BLUE

BLUE TILES



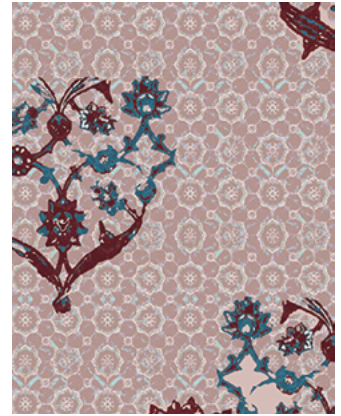
BLUE TILES BORDEAUX
NFBLUB



BLUE TILES GREY
NFBLUG



BLUE TILES OCRE
NFBLUO



BLUE TILES OLD PINK
NFBLUOP

◀ 1:10

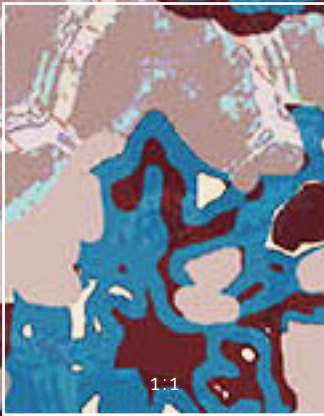
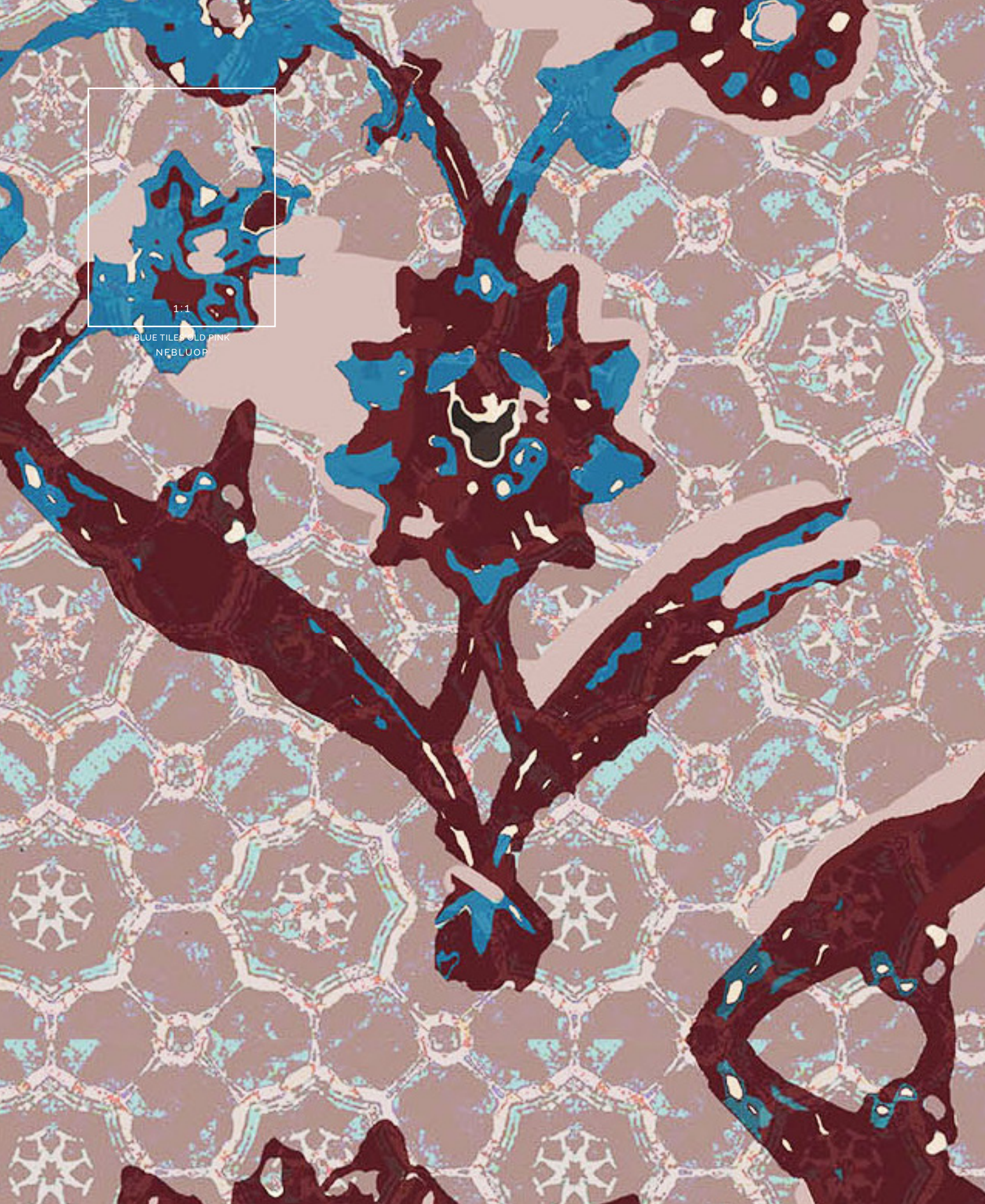
BLUE TILES BEIGE ROSE - NFBLUBR



◀ 1:50

mm L: 4230 x H: 3000

WALLPAPER COLLECTION - NINA FARRÉ



1:1

BLUE TILES OLD PINK
NFBLUOP



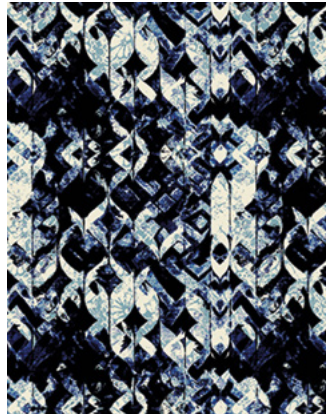


BLUE TILES BORDEAUX

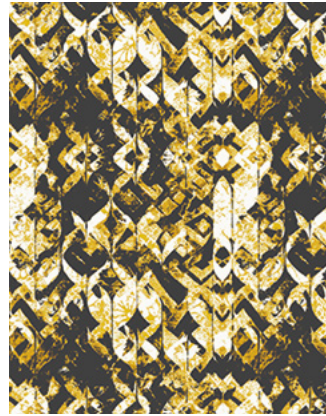
FONDU



FONDU BORDEAUX
NFFONB



FONDU DARK BLUE
NFFOND



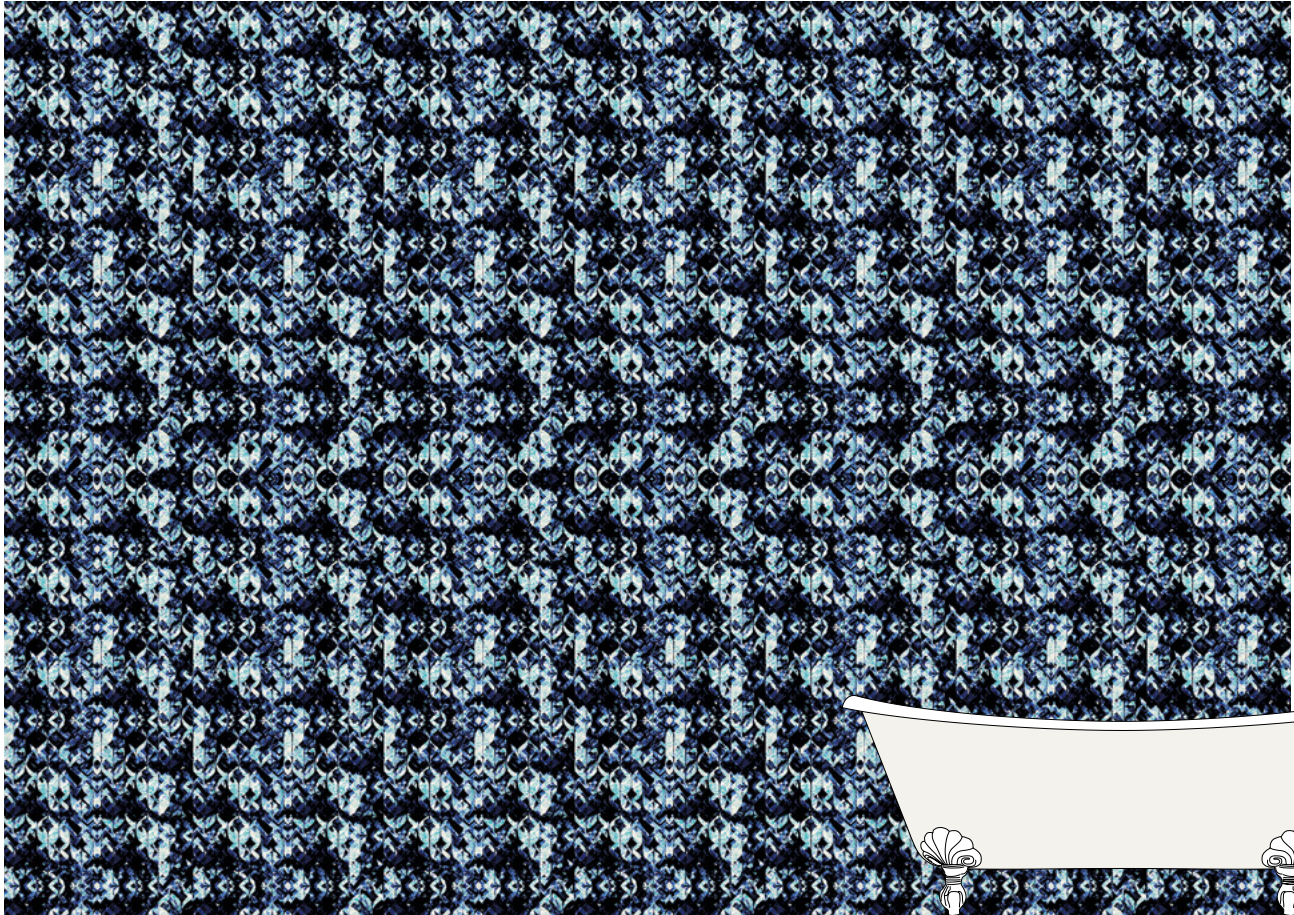
FONDU OCRE
NFFONO



FONDU RED
NFFONR

◀ 1:10

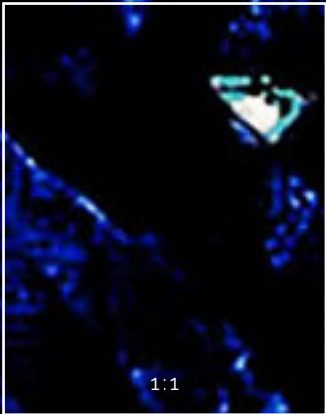
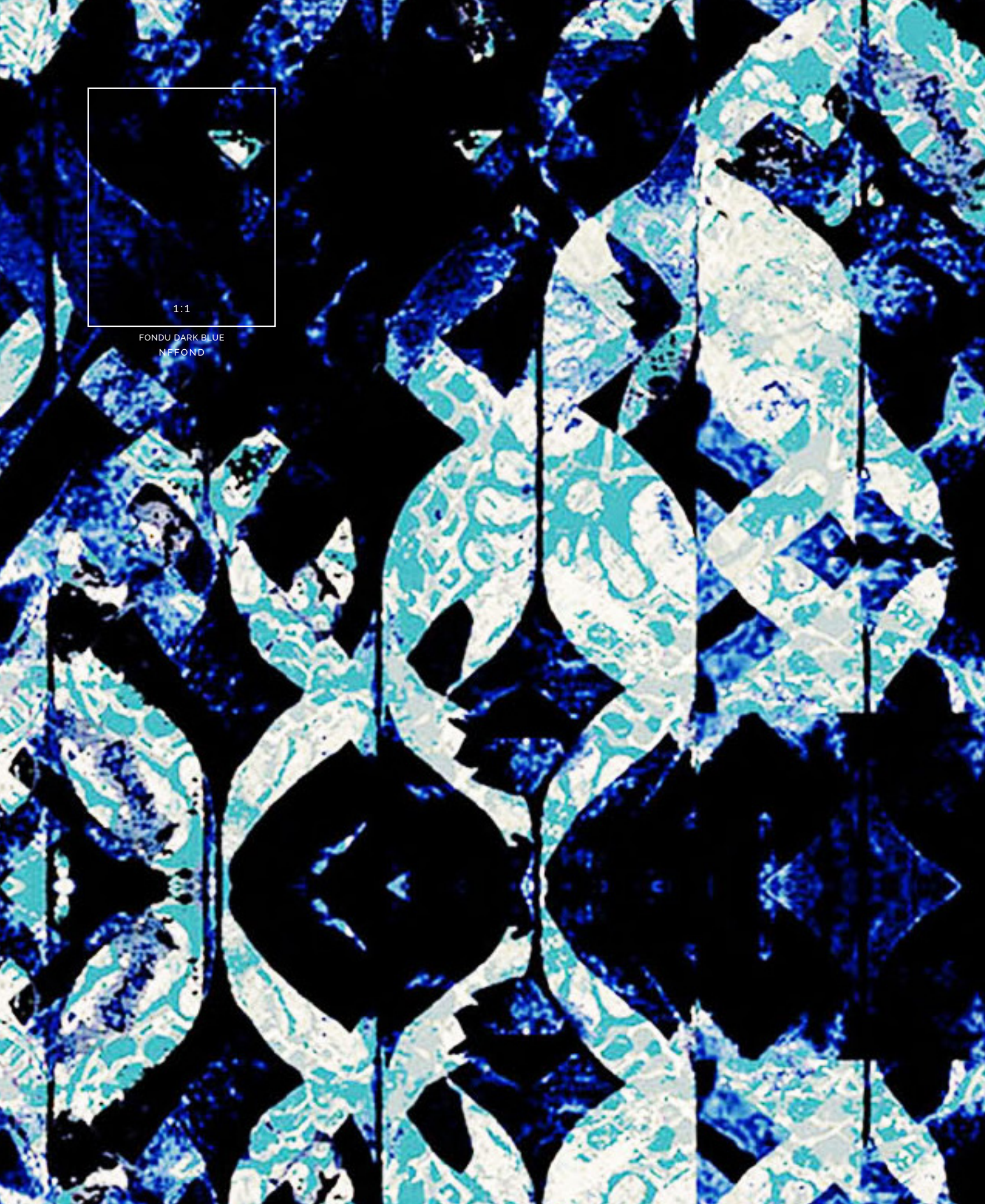
FONDU BLUE - NFFONBL



◀ 1:50

mm L: 4230 x H: 3000

WALLPAPER COLLECTION - NINA FARRÉ



1:1

FONDU DARK BLUE
NFFOND





FONDU BLUE

SAMODE



SAMODE BLUE
NFSAMB



SAMODE LAVANDE
NFSAML



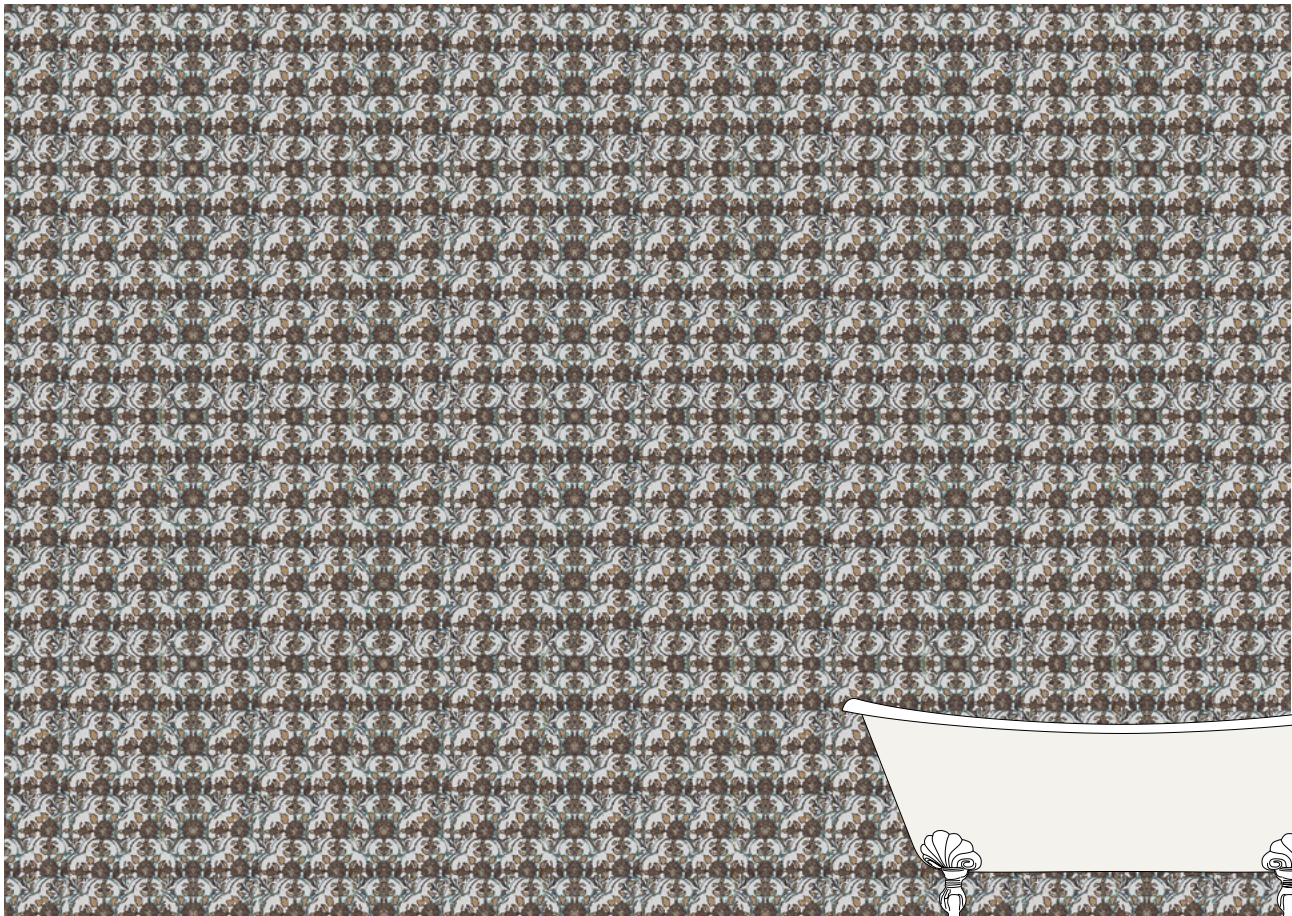
SAMODE NOIR&BLANC
NFSAMN



SAMODE YELLOW
NFSAMY

◀ 1:10

SAMODE BEIGE GRIS - NFSAMBG



◀ 1:50

mm L: 4230 x H: 3000

WALLPAPER COLLECTION - NINA FARRÉ



SAMODE NEGA



SAMODE NEGA NAVY BLUE
NFSAMNN



SAMODE NEGA PINK
NFSAMNP



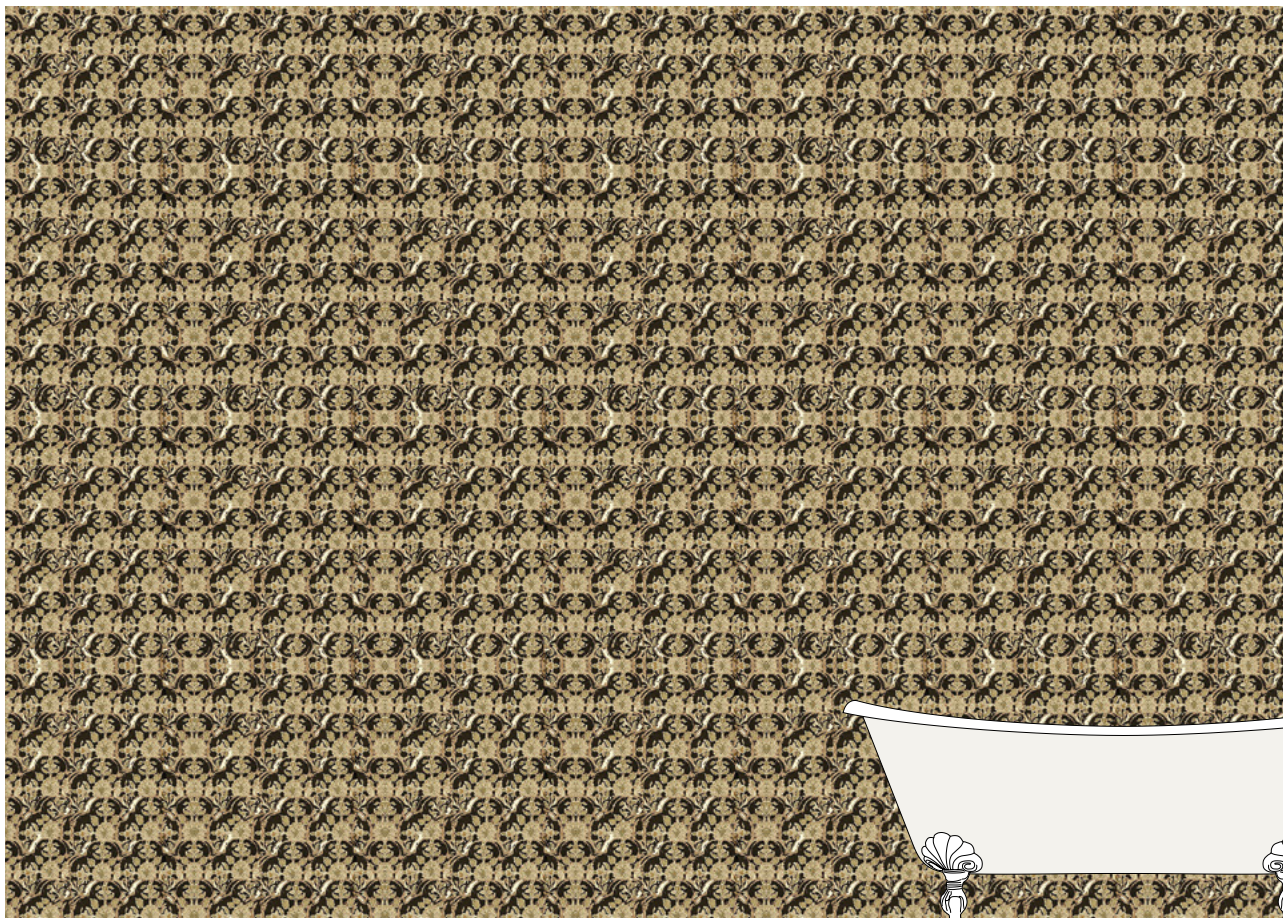
SAMODE NEGA RED
NFSAMNR



SAMODE NEGA YELLOW
NFSAMNY

◀ 1:10

SAMODE NEGA BEIGE - NFSAMNB



◀ 1:50

mm L: 4230 x H: 3000

WALLPAPER COLLECTION - NINA FARRÉ



TAPISSERIE



TAPISSERIE BORDEAUX
NFTAPB



TAPISSERIE GOLD
NFTAPG



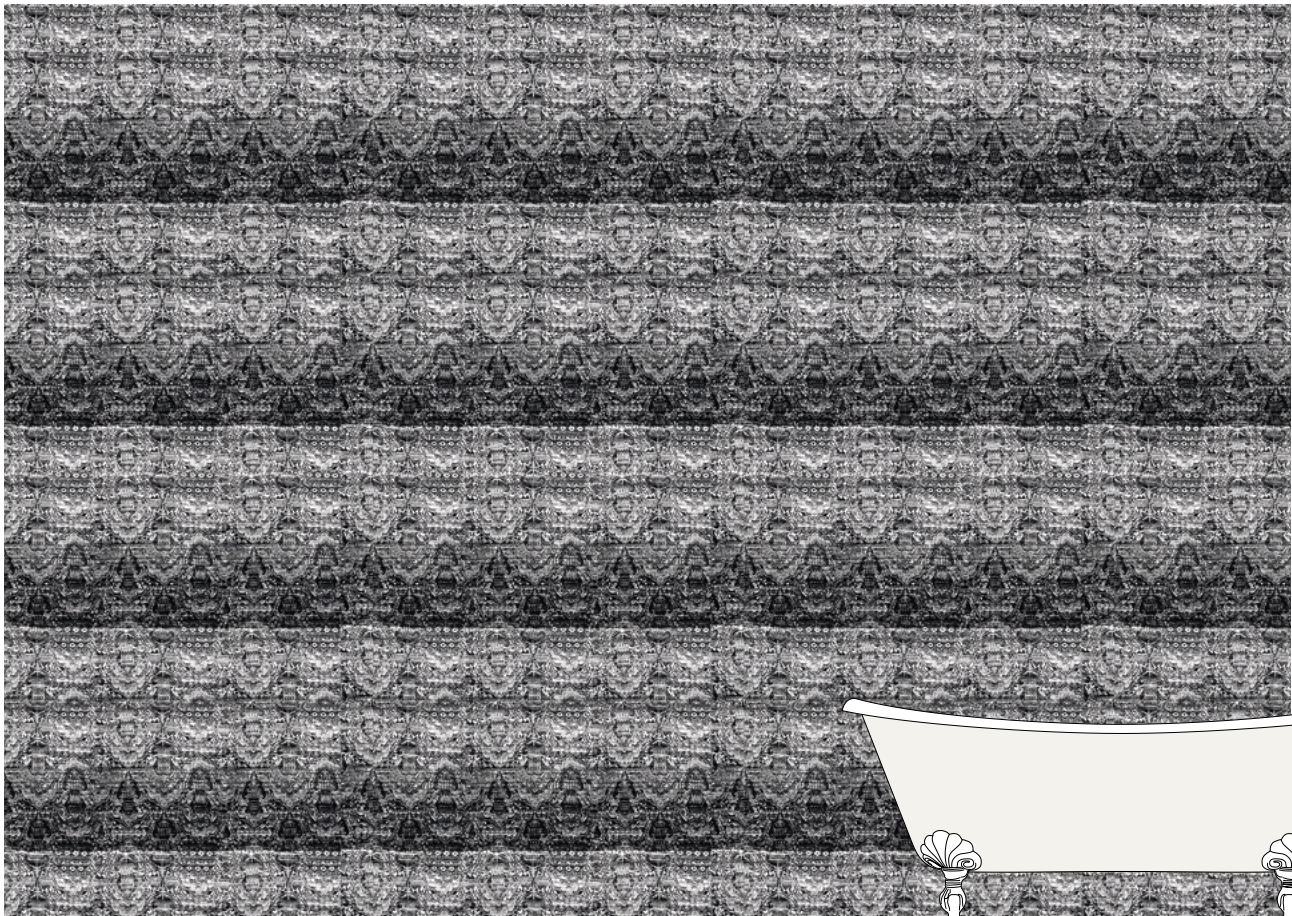
TAPISSERIE GREY BLUE
NFTAPGB



TAPISSERIE RED
NFTAPR

◀ 1:10

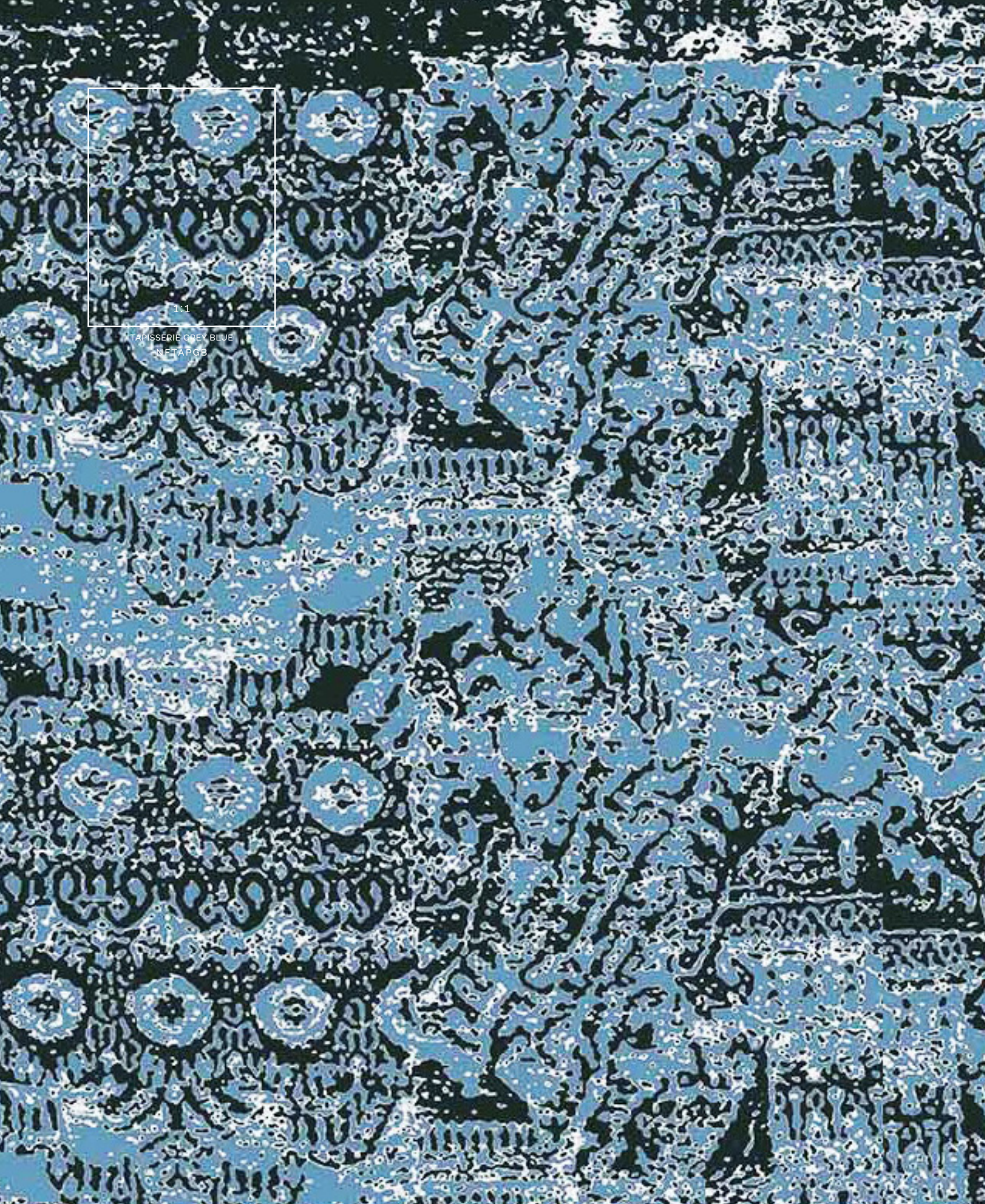
TAPISSERIE BLACK - NFTAPBL



◀ 1:50

mm L: 4230 x H: 3000

WALLPAPER COLLECTION - NINA FARRÉ



1:1

TAPISSÉRIE GREY BLUE
NFTAPCB

TAPISSERIE





TAPISserie BLACK

LISTINO PREZZI WALLPAPER COLLECTION

Prezzo Wallpaper Collection: P. 2,3570 - M²

CARATTERISTICHE TECNICHE GENERALI

Devon&Devon Wallpaper Collection è un prodotto di alta qualità che non rinuncia al rispetto per la natura, con l'obiettivo del minor impatto ambientale possibile.

La carta da parati viene stampata sulla parte superiore del supporto in vinile e sul retro di un foglio TNT 350g, che garantisce elevata stabilità in fase di applicazione e rimozione. La carta è facilmente lavabile con un panno umido (è da evitare qualunque prodotto abrasivo), ignifuga, non si restringe e non si deforma. Non contiene composti di metalli pesanti. È conforme alla norma su permeabilità e vapore acqueo e appartiene alla classe antincendio B-s2,d0. L'alta qualità è ideale per coperture di grandi e piccole dimensioni. Non richiedono etichette di pericolo secondo la direttiva UE 1999/45CE.

Le carte da parati Devon&Devon vengono tagliate utilizzando sistemi automatici di taglio che ne garantiscono la perfetta combaciabilità in fase di posa. Gli inchiostri possiedono certificati di eccellenza che garantiscono il massimo rispetto dell'ambiente, la certa provenienza delle materie prime e la sicurezza dell'utilizzo per preservare la salute. Non sono infiammabili, non combustibili e sono privi di nichel.

ORDINI

Assistiamo il cliente durante la fase di progettazione e realizzazione dei propri ambienti.

Le carte da parati si ordinano inviando il rilievo metrico delle pareti da rivestire. Sarà nostra cura restituire al cliente una proposta grafica e relativo preventivo di spesa. È fondamentale che le misure delle pareti siano chiare e precise.

In presenza di porte di grande formato o portefinestre, non verrà computata la parte centrale interna a queste. Le finestre invece seguono il principio del vuoto per pieno, per cui verranno stampate per intero per dare continuità nella parte sopra e sotto.

CONSIGLI DI POSA E AVVERTENZE

Le carte da parati Devon&Devon si posano su ogni tipo di superficie purché prive di qualunque imperfezione strutturale.

Per facilitare la comprensione del disegno in fase di posa, i pannelli vengono forniti numerati. Per l'installazione raccomandiamo di rivolgersi a personale altamente qualificato e specializzato, e di utilizzare colle idonee alla superficie di destinazione. L'uso della carta da parati è possibile anche all'interno della stanza da bagno, ma con alcuni accorgimenti: è sconsigliata l'applicazione negli ambienti doccia mentre è possibile applicare la carta da parati in altre pareti del bagno purché non siano a diretto contatto con l'acqua.

Raccomandiamo inoltre, prima della posa, di controllare attentamente il materiale ricevuto con la spedizione dell'ordine: non saranno infatti accettate contestazioni di sorta a materiale posato.

WALLPAPER COLLECTION PRICE LIST

Retail price Wallpaper Collection: P. 2.3570 - SQM

GENERAL TECHNICAL SPECIFICATIONS

Devon&Devon Wallpaper Collection is a high-quality, environmentally-friendly product designed to have the lowest environmental impact possible.

The wallpaper is printed on the top of the vinyl base and on the back of a 350g nonwoven (TNT) sheet, which guarantees high stability during application and removal. The paper can be cleaned easily with a damp cloth (any abrasive product should be avoided), is flame-retardant, does not shrink or distort. It does not contain any heavy metal compounds. It complies with regulations relating to permeability and water vapour and belongs to fire class rating B-s2,d0. Thanks to their high quality, they are ideal for covering small and large areas. They do not require hazard labels as per the EU 1999/45EC directive.

Devon&Devon wallpaper are cut using automatic cutting systems that guarantee their perfect matching during laying. The inks possess certificates of excellence which guarantees the utmost respect for the environment, as well as guaranteed the origin of the raw materials and the safety of the product when being used. They are unflammmable, non-combustible and nickel free.

ORDERS

We assist our clients throughout the process of designing and creating the ambience in which the wallpaper is to be used.

The wallpaper should be ordered by sending the metric survey of the walls to be covered. We will then send the client a graphic proposal and related cost estimate. It is essential that the wall measurements are clear and precise.

In the case of large doors their internal central part will be not take into consideration for the graphics nor the order. Windows instead follow the total volume (inclusive of dead freight) principle, and will therefore be printed in their entirety to ensure the continuity of the design in the parts above and below.

RECOMMENDATIONS AND INSTRUCTIONS

Devon&Devon wallpaper can be applied to all types of surface, as long as they contain no structural imperfections.

To facilitate the understanding of the design during installation, the panels are supplied numbered. For the installation we recommend contacting highly qualified and specialized personnel, and to use glues suitable for the surface in which the wallpaper is to be used. The wallpaper can also be used inside bathrooms, but with certain precautions: we advise you not to apply the wallpaper in shower areas, while it is possible to apply it on other walls of the bathroom provided that they are not in direct contact with water.

Before the installation, we strongly recommend to check the goods received once the order has been delivered; we cannot accept any claims once the materials have been installed to the walls.

CONDIZIONI GENERALI DI VENDITA

Le descrizioni e le immagini dei prodotti del presente catalogo sono puramente indicative e non possono essere considerate vincolanti ai fini del loro utilizzo.

Devon&Devon si riserva di apportare ai prodotti le modifiche che ritiene più opportune, in qualsiasi momento e senza preavviso.

Per ulteriori informazioni sulle caratteristiche tecniche dei prodotti e sulle condizioni generali di vendita, vi invitiamo a visitare il sito www.devon-devon.com.

Contatti:

Devon&Devon S.p.A.

Via Arno, 26 - 50019 - Sesto Fiorentino - Italia

Tel. +39 055 308350

Fax. +39 055 375549

info@devon-devon.com

Società soggetta ad attività di direzione e coordinamento Italcer S.p.A.

www.devon-devon.com

GENERAL TERMS AND CONDITIONS OF SALE

Descriptions and pictures of products included in this catalogue have an indicative value only and are not binding for products' use.

Devon&Devon reserves the right to modify their products without prior notification.

For further technical information of the products and the General Terms and Conditions of Sale, please visit www.devon-devon.com.

Contacts:

Devon&Devon S.p.A.

Via Arno, 26 - 50019 - Sesto Fiorentino - Italy

Tel. +39 055 308350

Fax. +39 055 375549

info@devon-devon.com

Company subject to management and coordination activities Italcir S.p.A.

www.devon-devon.com